

Iowa County, Iowa  
Iowa South Zone (1402)  
Horiz. Datum: NAD83(NSRS2007)  
Vert. Datum: NAVD 1988  
US Survey Feet  
**2008**

Point Name: **4232**

**Designation:** 2008-232 Iowa Co GPS Control Pt

Northing: **650716.45sft** Easting: **2047837.53sft**

Orthometric Height: **826.74sft** Ellipsoid Height: **721.34sft** **Geoid03**

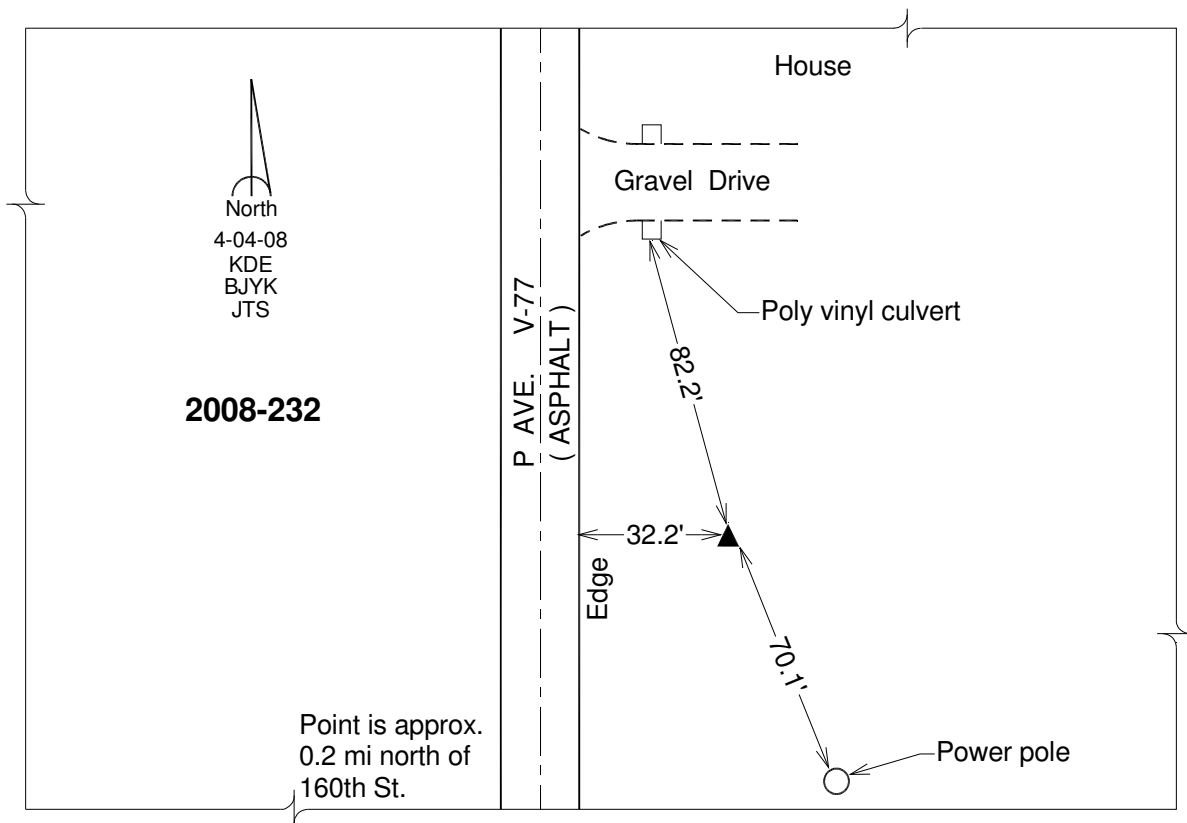
Latitude: **41°46'35.02586"N**

Longitude: **92°00'22.59786"W**

Mapping Angle: **0°59'02"**

Combination Scale Factor: **0.99996436**

**Monument Type:** Berntsen 3/4" Top Security Rod Monument with a 2-1/2" dia. domed survey cap and permanent magnet encased in a white PVC pipe with a NGS style alum. access cover.



*This document was prepared by DCI and GBC for use by Iowa County, Iowa.*