

Iowa County, Iowa
Iowa South Zone (1402)
Horiz. Datum: NAD83(NSRS2007)
Vert. Datum: NAVD 1988
US Survey Feet
2008

Point Name: **4233**

Designation: 2008-233 Iowa Co GPS Control Pt

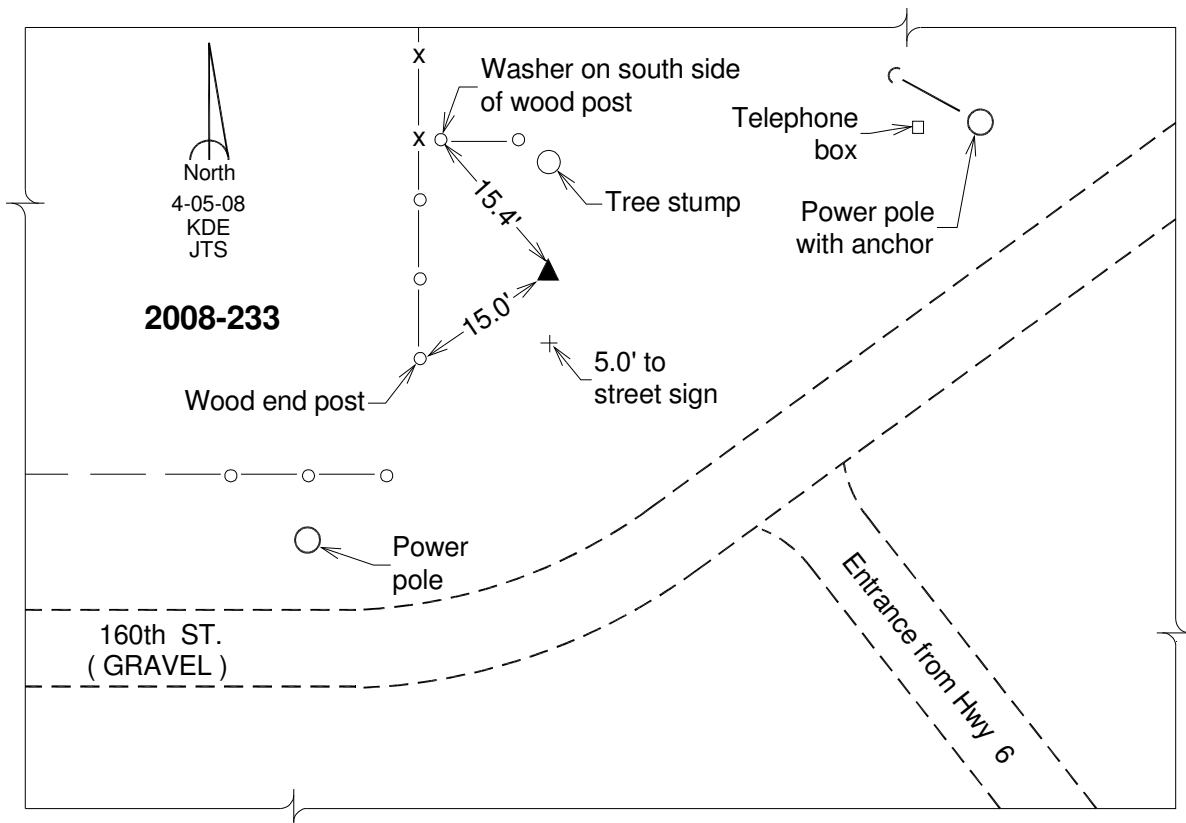
Northing: **649860.23sft** Easting: **2015888.63sft**

Orthometric Height: **764.54sft** Ellipsoid Height: **659.39sft** **Geoid03**

Latitude: **41°46'31.77554"N** Longitude: **92°07'24.38544"W**

Mapping Angle: **0°54'24"** Combination Scale Factor: **0.99996715**

Monument Type: Berntsen 3/4" Top Security Rod Monument with a 2-1/2" dia. domed survey cap and permanent magnet encased in a white PVC pipe with a NGS style alum. access cover.



This document was prepared by DCI and GBC for use by Iowa County, Iowa.