

**Iowa County, Iowa**  
 Iowa South Zone (1402)  
 Horiz. Datum: NAD83(NSRS2007)  
 Vert. Datum: NAVD 1988  
 US Survey Feet  
**2008**

Point Name: **4235**

**Designation:** 2008-235 Iowa Co GPS Control Pt

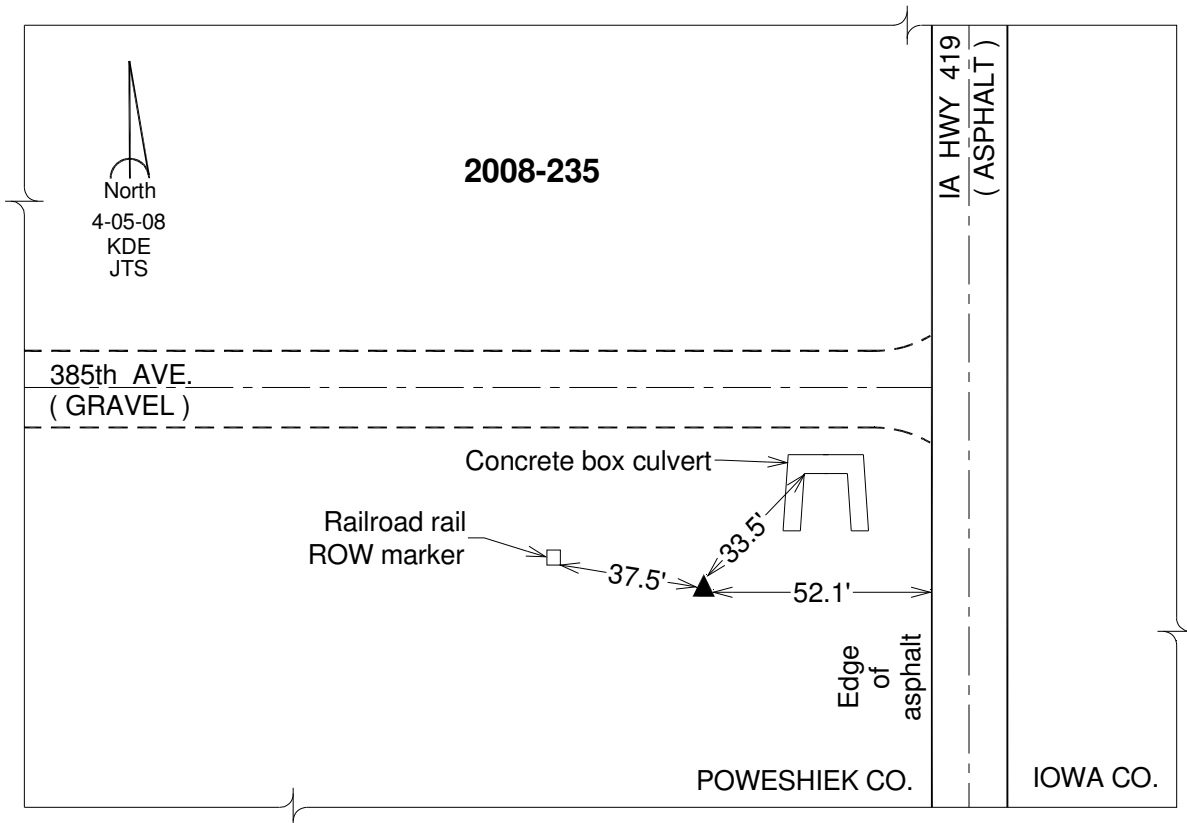
Northing: **636115.22sft**    Easting: **1967898.12sft**

Orthometric Height: **795.96sft**    Ellipsoid Height: **690.84sft**    **Geoid03**

Latitude: **41°44'23.01992"N**                      Longitude: **92°18'00.19769"W**

Mapping Angle: **0°47'25"**                      Combination Scale Factor: **0.99995958**

**Monument Type:** Berntsen 3/4" Top Security Rod Monument with a 2-1/2" dia. domed survey cap and permanent magnet encased in a white PVC pipe with a NGS style alum. access cover.



*This document was prepared by DCI and GBC for use by Iowa County, Iowa.*