

Iowa County, Iowa
Iowa South Zone (1402)
Horiz. Datum: NAD83(NSRS2007)
Vert. Datum: NAVD 1988
US Survey Feet
2008

Point Name: **4236**

Designation: 2008-236 Iowa Co GPS Control Pt

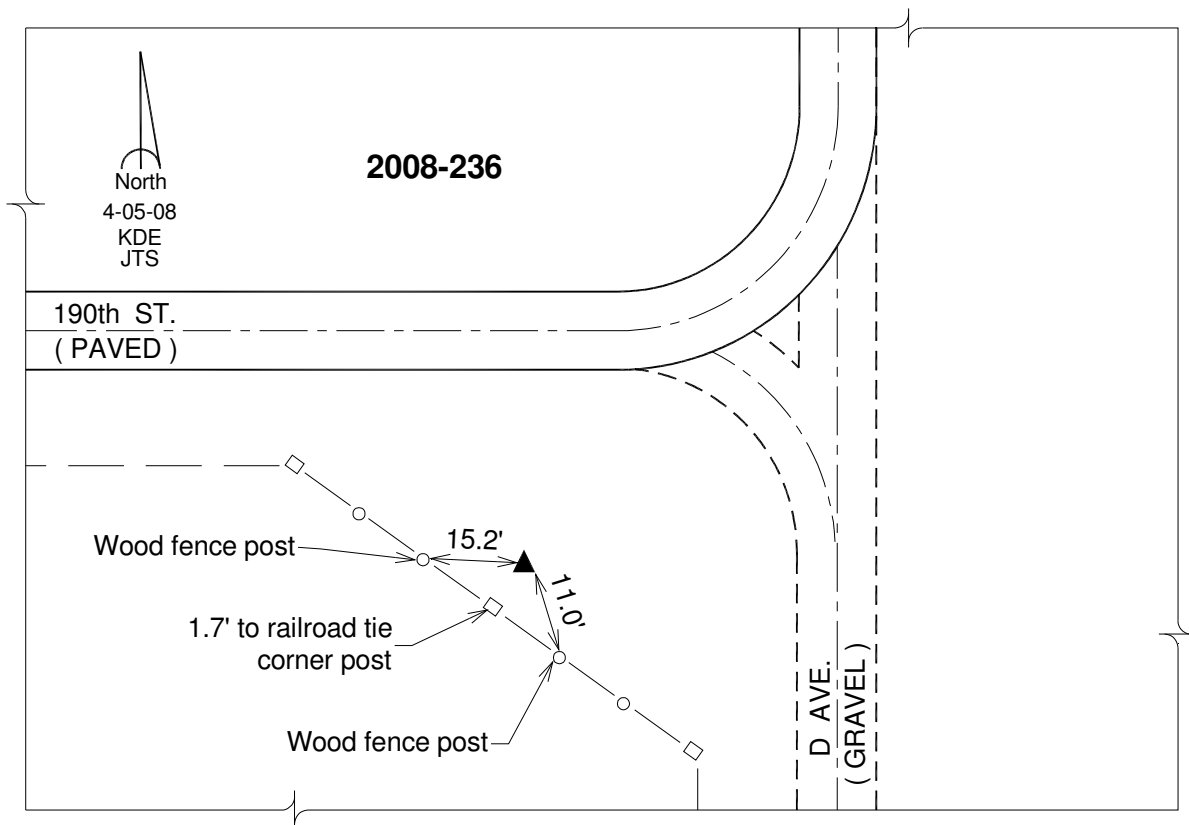
Northing: **634031.14**sft Easting: **1984171.07**sft

Orthometric Height: **796.89**sft Ellipsoid Height: **691.68**sft **Geoid03**

Latitude: **41°44'00.15980"N** Longitude: **92°14'25.96869"W**

Mapping Angle: **0°49'47"** Combination Scale Factor: **0.99995851**

Monument Type: Berntsen 3/4" Top Security Rod Monument with a 2-1/2" dia. domed survey cap and permanent magnet encased in a white PVC pipe with a NGS style alum. access cover.



This document was prepared by DCI and GBC for use by Iowa County, Iowa.