

Iowa County, Iowa
Iowa South Zone (1402)
Horiz. Datum: NAD83(NSRS2007)
Vert. Datum: NAVD 1988
US Survey Feet
2008

Point Name: **4237**

Designation: 2008-237 Iowa Co GPS Control Pt

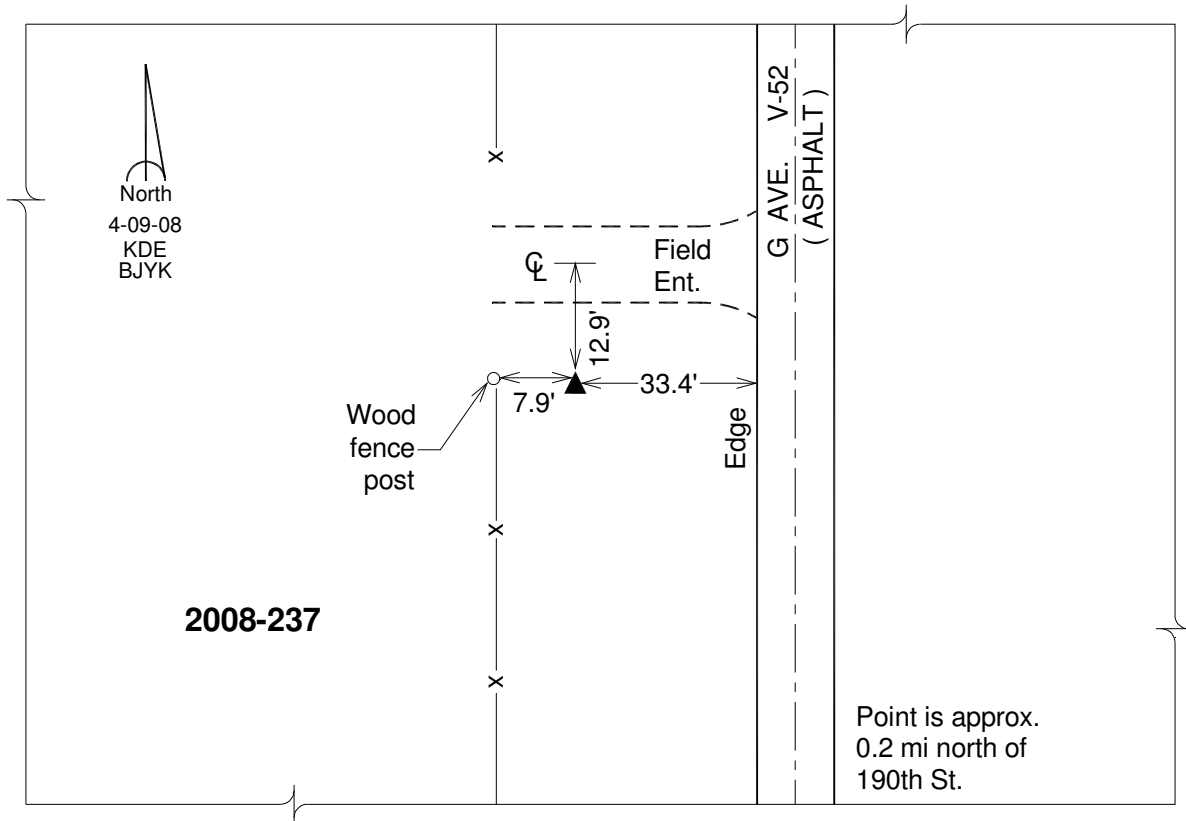
Northing: **634585.13**sft Easting: **2000005.84**sft

Orthometric Height: **848.41**sft Ellipsoid Height: **743.13**sft **Geoid03**

Latitude: **41°44'03.31504"N** Longitude: **92°10'57.03280"W**

Mapping Angle: **0°52'04"** Combination Scale Factor: **0.99995620**

Monument Type: Berntsen 3/4" Top Security Rod Monument with a 2-1/2" dia. domed survey cap and permanent magnet encased in a white PVC pipe with a NGS style alum. access cover.



This document was prepared by DCI and GBC for use by Iowa County, Iowa.