

Iowa County, Iowa
Iowa South Zone (1402)
Horiz. Datum: NAD83(NSRS2007)
Vert. Datum: NAVD 1988
US Survey Feet
2008

Point Name: **4238**

Designation: 2008-238 Iowa Co GPS Control Pt

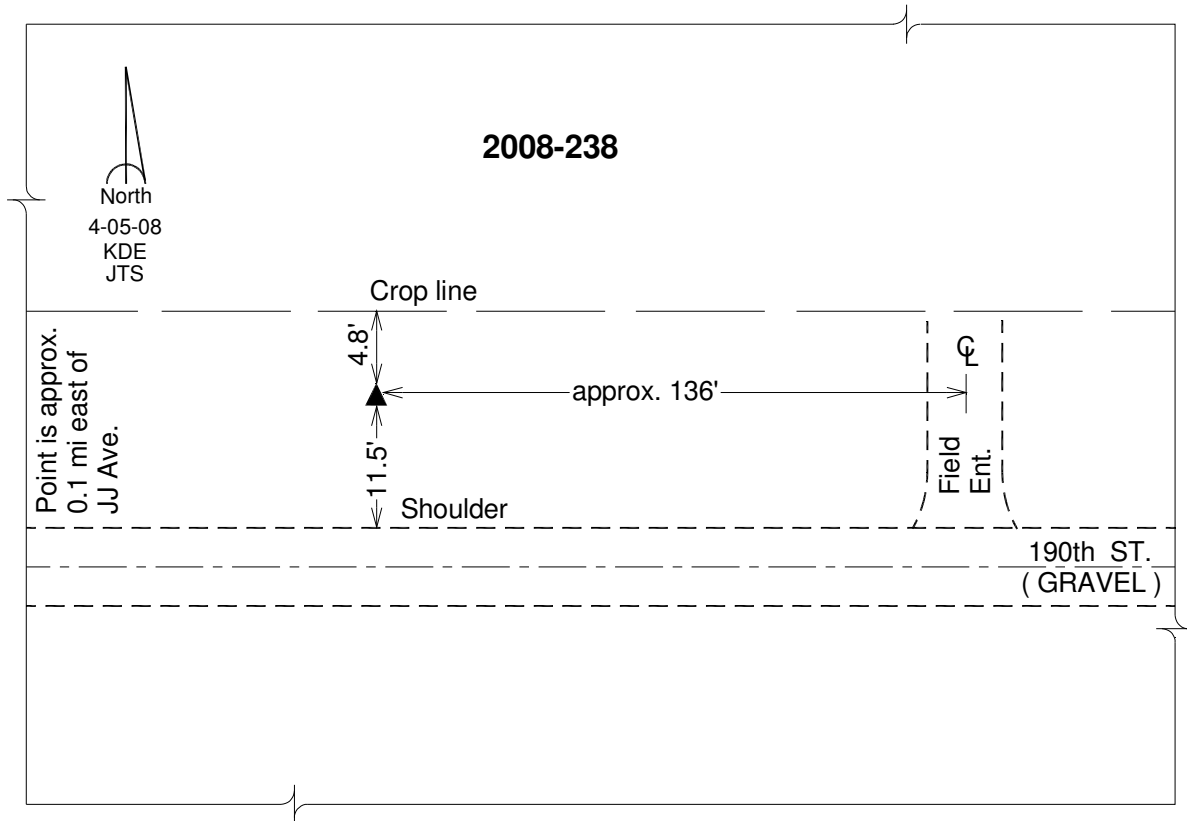
Northing: **633936.31**sft Easting: **2018996.35**sft

Orthometric Height: **896.52**sft Ellipsoid Height: **791.11**sft **Geoid03**

Latitude: **41°43'53.98918"N** Longitude: **92°06'46.72653"W**

Mapping Angle: **0°54'49"** Combination Scale Factor: **0.99995349**

Monument Type: Berntsen 3/4" Top Security Rod Monument with a 2-1/2" dia. domed survey cap and permanent magnet encased in a white PVC pipe with a NGS style alum. access cover.



This document was prepared by DCI and GBC for use by Iowa County, Iowa.