

Iowa County, Iowa  
Iowa South Zone (1402)  
Horiz. Datum: NAD83(NSRS2007)  
Vert. Datum: NAVD 1988  
US Survey Feet  
**2008**

Point Name: **4241**

**Designation:** 2008-241 Iowa Co GPS Control Pt

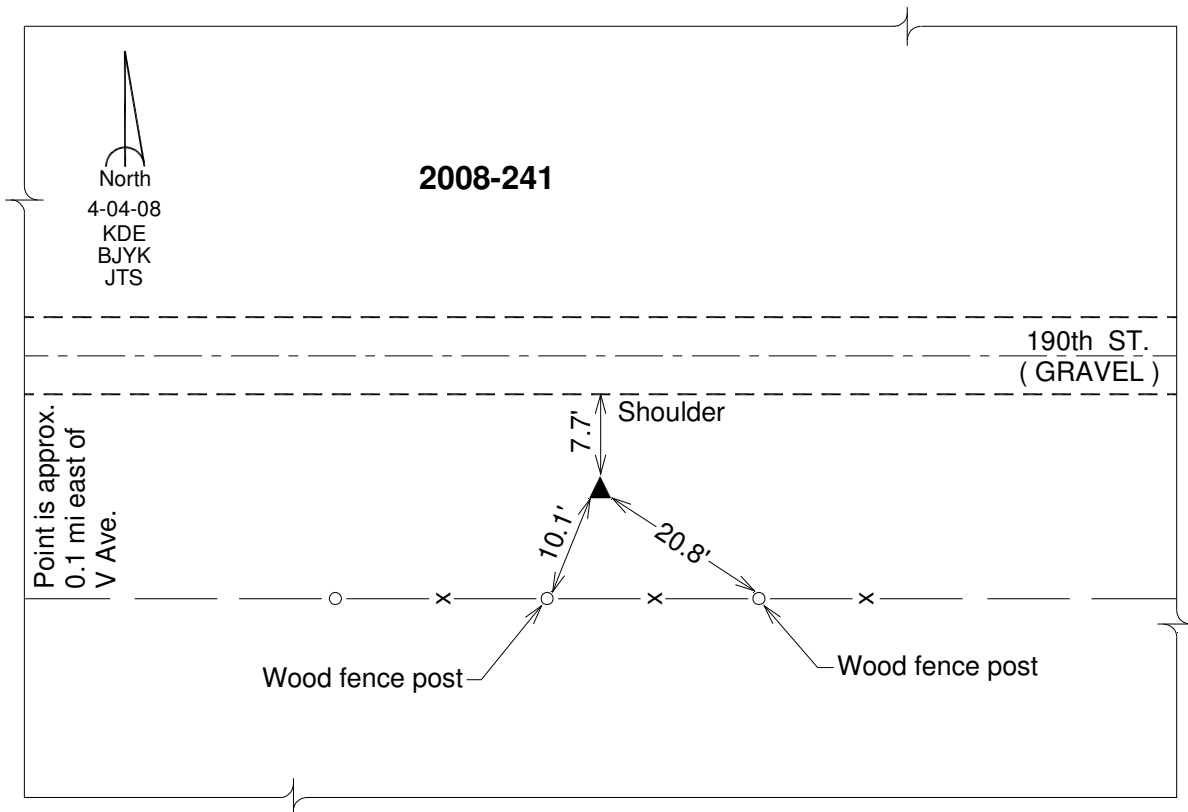
Northing: **634505.65**sft Easting: **2080480.67**sft

Orthometric Height: **832.44**sft Ellipsoid Height: **726.49**sft **Geoid03**

Latitude: **41°43'49.14116"N** Longitude: **91°53'15.81325"W**

Mapping Angle: **1°03'43"** Combination Scale Factor: **0.99995635**

**Monument Type:** Berntsen 3/4" Top Security Rod Monument with a 2-1/2" dia. domed survey cap and permanent magnet encased in a white PVC pipe with a NGS style alum. access cover.



*This document was prepared by DCI and GBC for use by Iowa County, Iowa.*