

Iowa County, Iowa  
Iowa South Zone (1402)  
Horiz. Datum: NAD83(NSRS2007)  
Vert. Datum: NAVD 1988  
US Survey Feet  
**2008**

Point Name: **4242**

**Designation:** 2008-242 Iowa Co GPS Control Pt

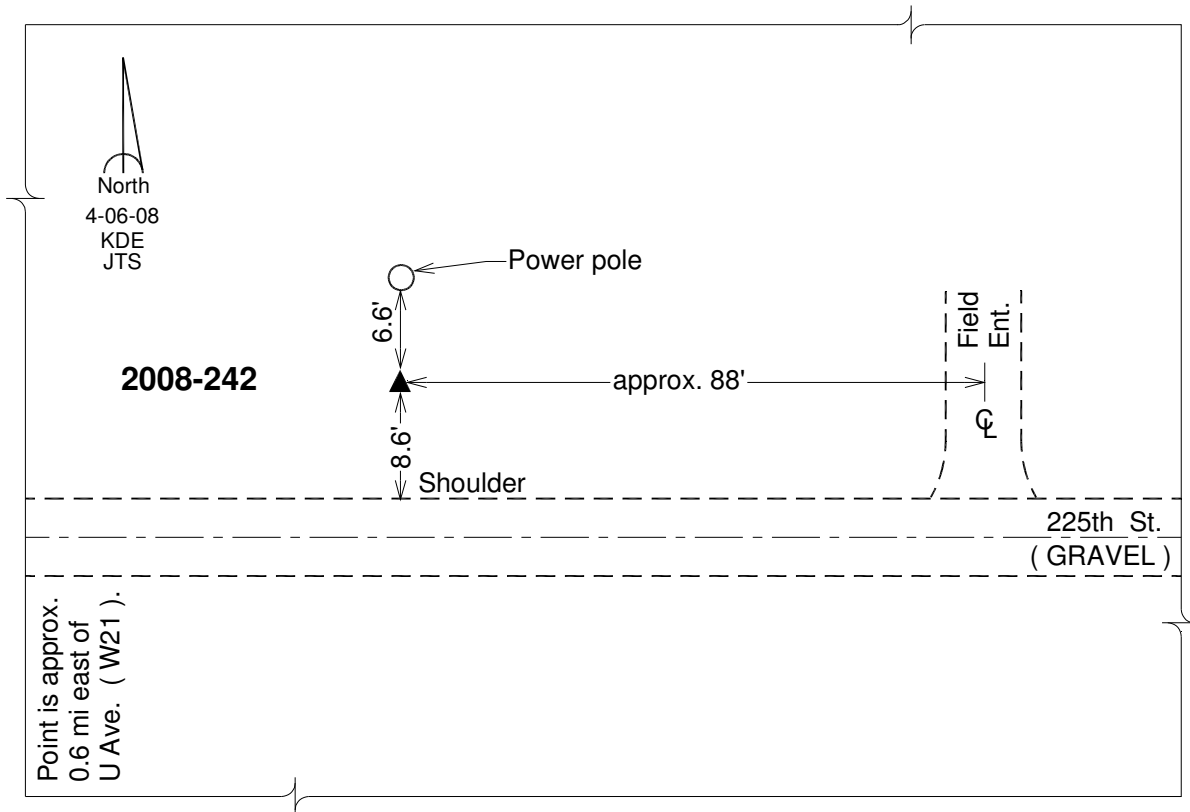
Northing: **616444.75**sft    Easting: **2077617.37**sft

Orthometric Height: **855.27**sft    Ellipsoid Height: **749.17**sft    **Geoid03**

Latitude: **41°40'51.26057"N**    Longitude: **91°53'57.95282"W**

Mapping Angle: **1°03'15"**    Combination Scale Factor: **0.99994767**

**Monument Type:** Berntsen 3/4" Top Security Rod Monument with a 2-1/2" dia. domed survey cap and permanent magnet encased in a white PVC pipe with a NGS style alum. access cover.



*This document was prepared by DCI and GBC for use by Iowa County, Iowa.*