

Iowa County, Iowa  
Iowa South Zone (1402)  
Horiz. Datum: NAD83(NSRS2007)  
Vert. Datum: NAVD 1988  
US Survey Feet  
**2008**

Point Name: **4243 (Destroyed 07-16-08)**

**Designation:** 2008-243 Iowa Co GPS Control Pt (Destroyed 07-16-08 by site grading for Hummer Trucking)

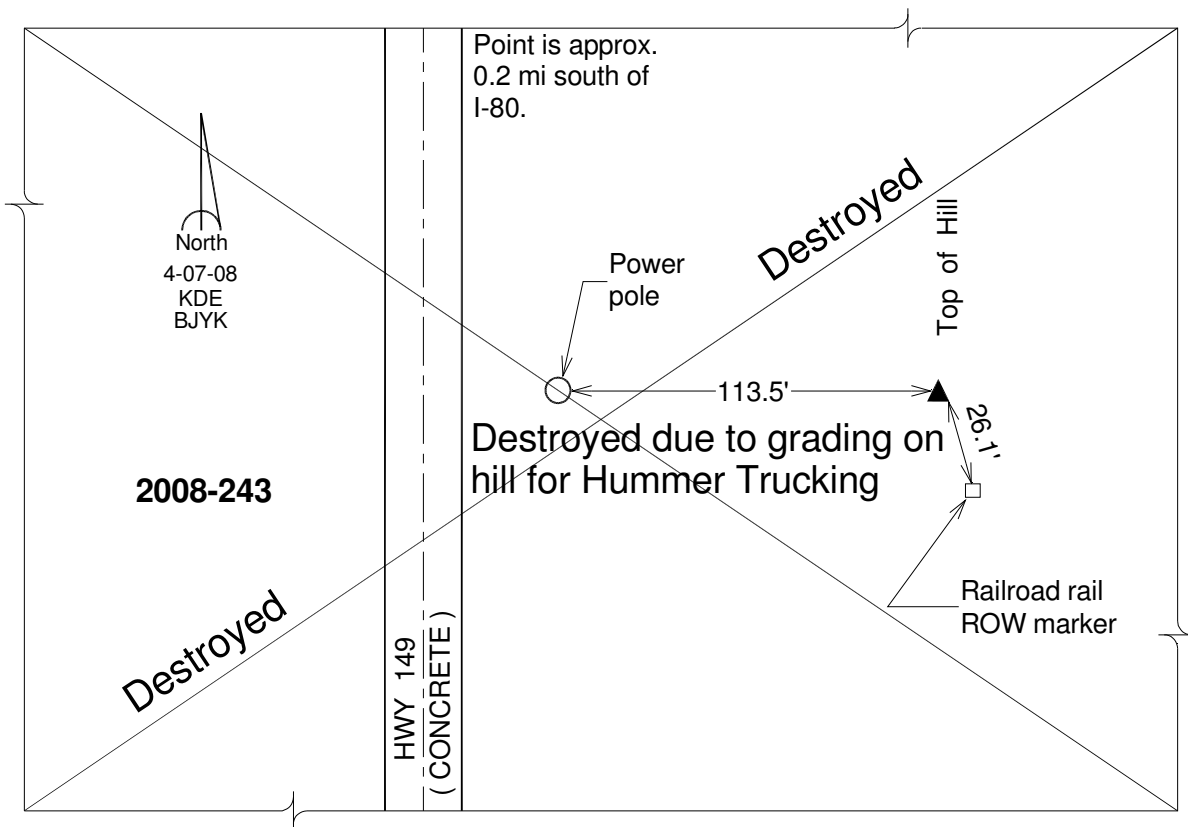
Northing: **616558.51sft** Easting: **2048163.92sft**

Orthometric Height: **842.35sft** Ellipsoid Height: **736.48sft** **Geoid03**

Latitude: **41°40'57.55817"N** Longitude: **92°00'26.02712"W**

Mapping Angle: **0°59'00"** Combination Scale Factor: **0.99994853**

**Monument Type:** Berntsen 3/4" Top Security Rod Monument with a 2-1/2" dia. domed survey cap and permanent magnet encased in a white PVC pipe with a NGS style alum. access cover.



*This document was prepared by DCI and GBC for use by Iowa County, Iowa.*