

Iowa County, Iowa
 Iowa South Zone (1402)
 Horiz. Datum: NAD83(NSRS2007)
 Vert. Datum: NAVD 1988
 US Survey Feet
2008

Point Name: **4249**

Designation: 2008-249 Iowa Co GPS Control Pt

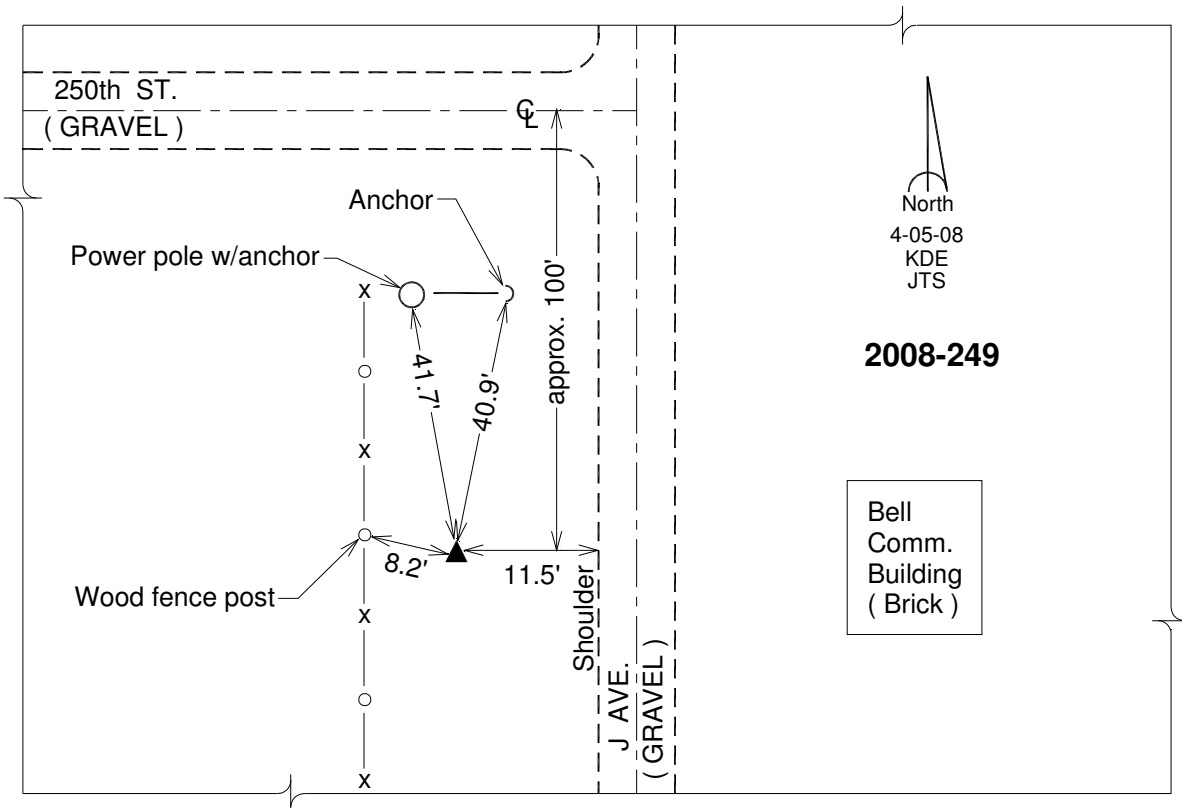
Northing: **601949.61**sft Easting: **2016274.37**sft

Orthometric Height: **904.48**sft Ellipsoid Height: **798.75**sft **Geoid03**

Latitude: **41°38'38.44038"N** Longitude: **92°07'29.29152"W**

Mapping Angle: **0°54'21"** Combination Scale Factor: **0.99994012**

Monument Type: Berntsen 3/4" Top Security Rod Monument with a 2-1/2" dia. domed survey cap and permanent magnet encased in a white PVC pipe with a NGS style alum. access cover.



This document was prepared by DCI and GBC for use by Iowa County, Iowa.