

Iowa County, Iowa
Iowa South Zone (1402)
Horiz. Datum: NAD83(NSRS2007)
Vert. Datum: NAVD 1988
US Survey Feet
2008

Point Name: **4250**

Designation: 2008-250 Iowa Co GPS Control Pt

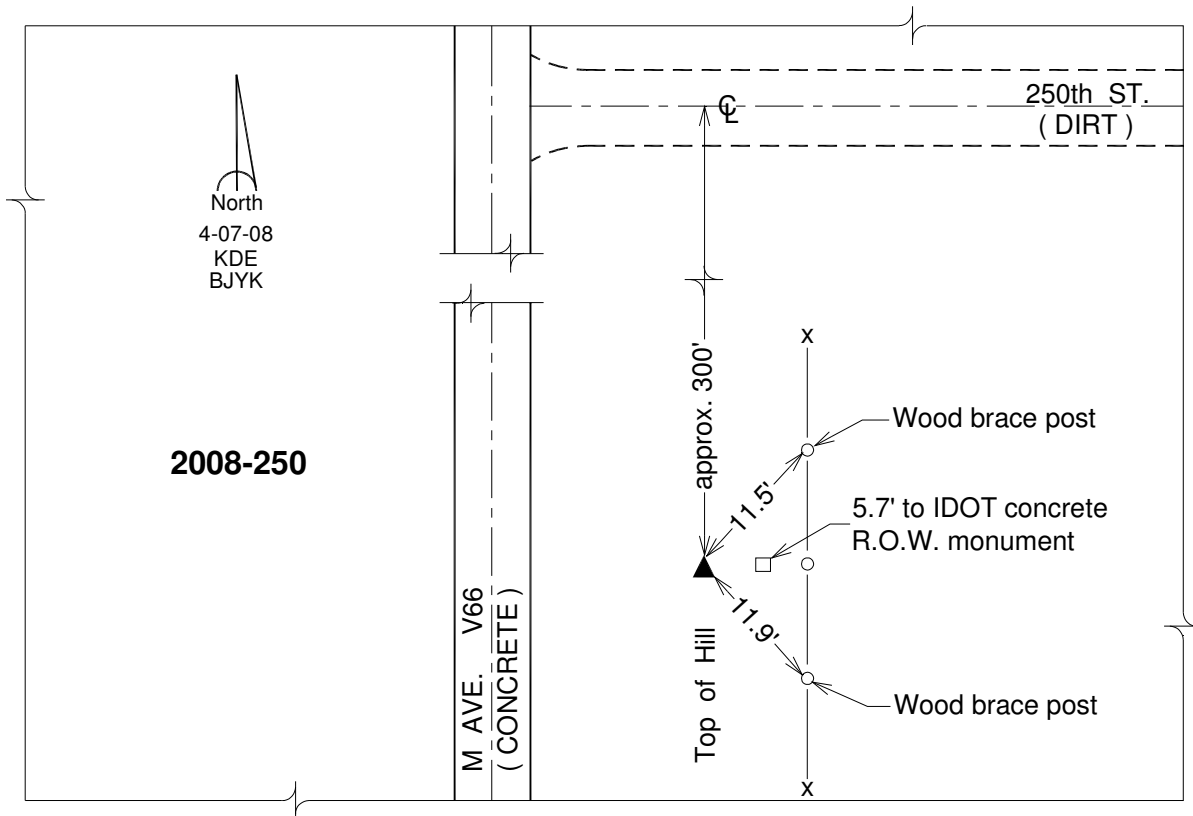
Northing: **601913.25**sft Easting: **2032330.81**sft

Orthometric Height: **873.04**sft Ellipsoid Height: **767.16**sft **Geoid03**

Latitude: **41°38'35.51975"N** Longitude: **92°03'57.84536"W**

Mapping Angle: **0°56'40"** Combination Scale Factor: **0.99994152**

Monument Type: Berntsen 3/4" Top Security Rod Monument with a 2-1/2" dia. domed survey cap and permanent magnet encased in a white PVC pipe with a NGS style alum. access cover.



This document was prepared by DCI and GBC for use by Iowa County, Iowa.