

Iowa County, Iowa
Iowa South Zone (1402)
Horiz. Datum: NAD83(NSRS2007)
Vert. Datum: NAVD 1988
US Survey Feet
2008

Point Name: **4251**

Designation: 2008-251 Iowa Co GPS Control Pt

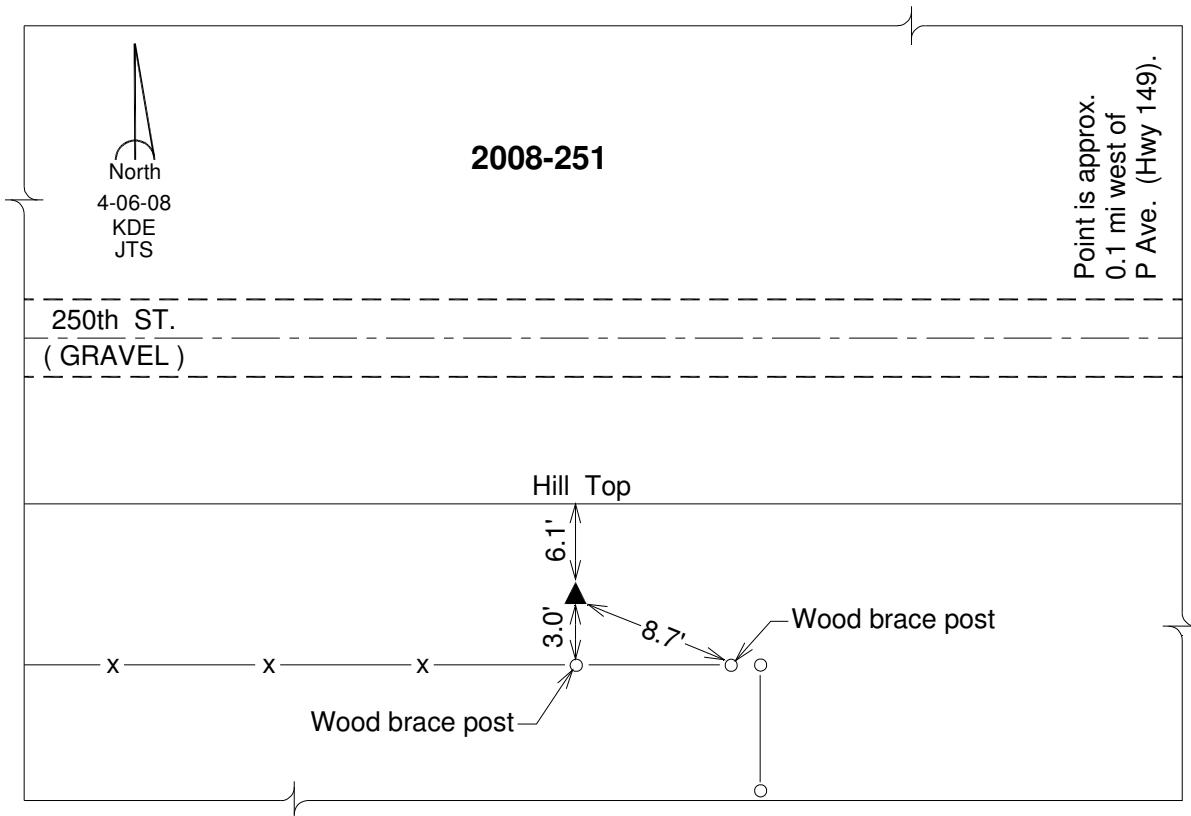
Northing: **602610.54**sft Easting: **2047409.16**sft

Orthometric Height: **830.00**sft Ellipsoid Height: **723.98**sft **Geoid03**

Latitude: **41°38'39.90493"N** Longitude: **92°00'39.11953"W**

Mapping Angle: **0°58'51"** Combination Scale Factor: **0.99994374**

Monument Type: Berntsen 3/4" Top Security Rod Monument with a 2-1/2" dia. domed survey cap and permanent magnet encased in a white PVC pipe with a NGS style alum. access cover.



This document was prepared by DCI and GBC for use by Iowa County, Iowa.