

Iowa County, Iowa
Iowa South Zone (1402)
Horiz. Datum: NAD83(NSRS2007)
Vert. Datum: NAVD 1988
US Survey Feet
2008

Point Name: **4253**

Designation: 2008-253 Iowa Co GPS Control Pt

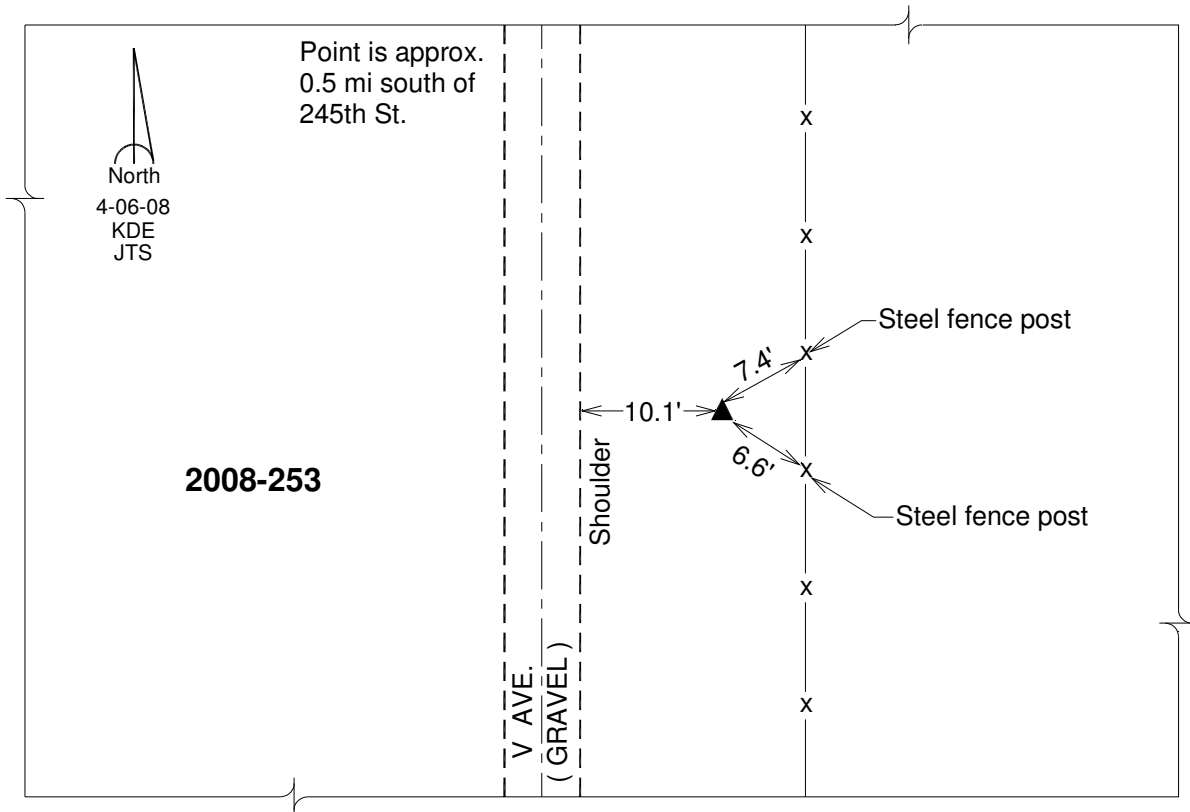
Northing: **603629.23sft** Easting: **2080140.15sft**

Orthometric Height: **828.24sft** Ellipsoid Height: **721.97sft** **Geoid03**

Latitude: **41 °38'44.20917"N** Longitude: **91 °53'27.83546"W**

Mapping Angle: **1 °03'35"** Combination Scale Factor: **0.99994400**

Monument Type: Berntsen 3/4" Top Security Rod Monument with a 2-1/2" dia. domed survey cap and permanent magnet encased in a white PVC pipe with a NGS style alum. access cover.



This document was prepared by DCI and GBC for use by Iowa County, Iowa.