

**Iowa County, Iowa**  
 Iowa South Zone (1402)  
 Horiz. Datum: NAD83(NSRS2007)  
 Vert. Datum: NAVD 1988  
 US Survey Feet  
**2008**

Point Name: **4257**

**Designation:** 2008-257 Iowa Co GPS Control Pt

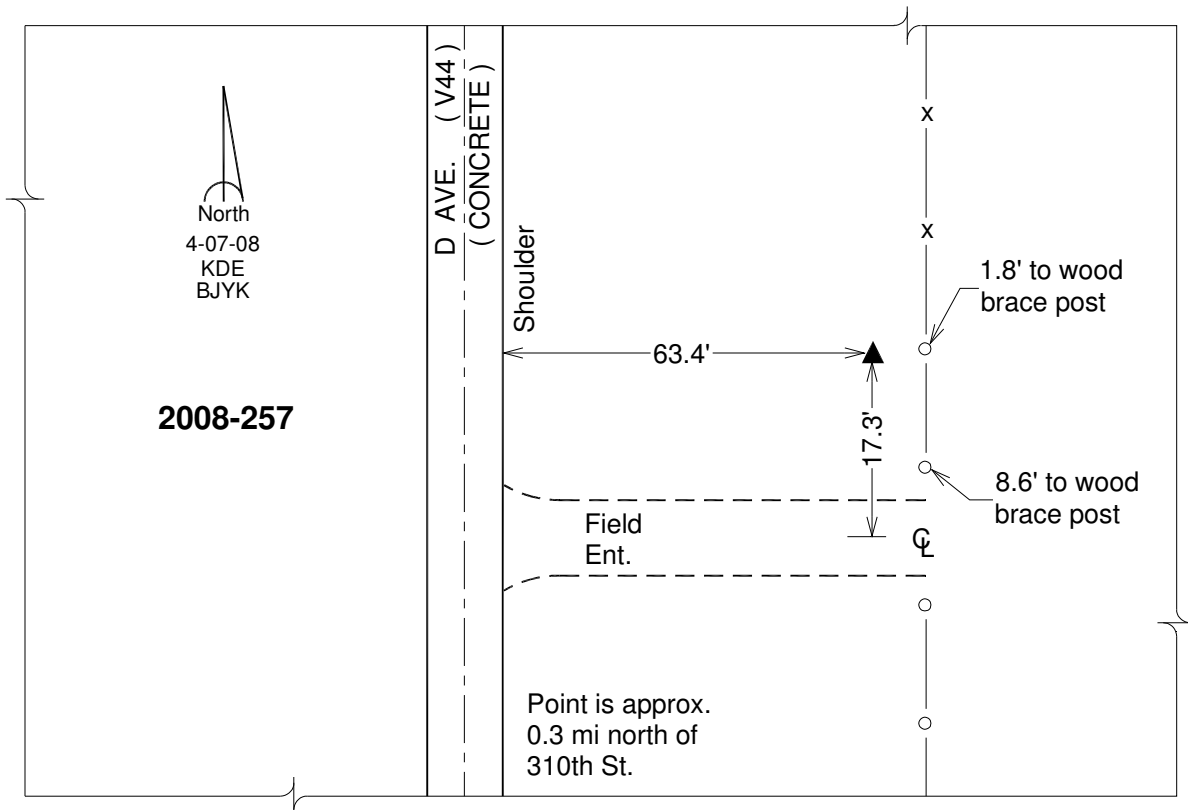
Northing: **569574.05sft**    Easting: **1985513.18sft**

Orthometric Height: **863.44sft**    Ellipsoid Height: **757.83sft**    **Geoid03**

Latitude: **41°33'23.21607"N**    Longitude: **92°14'20.59276"W**

Mapping Angle: **0°49'50"**    Combination Scale Factor: **0.99993143**

**Monument Type:** Berntsen 3/4" Top Security Rod Monument with a 2-1/2" dia. domed survey cap and permanent magnet encased in a white PVC pipe with a NGS style alum. access cover.



*This document was prepared by DCI and GBC for use by Iowa County, Iowa.*