

Iowa County, Iowa  
Iowa South Zone (1402)  
Horiz. Datum: NAD83(NSRS2007)  
Vert. Datum: NAVD 1988  
US Survey Feet  
**2008**

Point Name: **4258**

**Designation:** 2008-258 Iowa Co GPS Control Pt

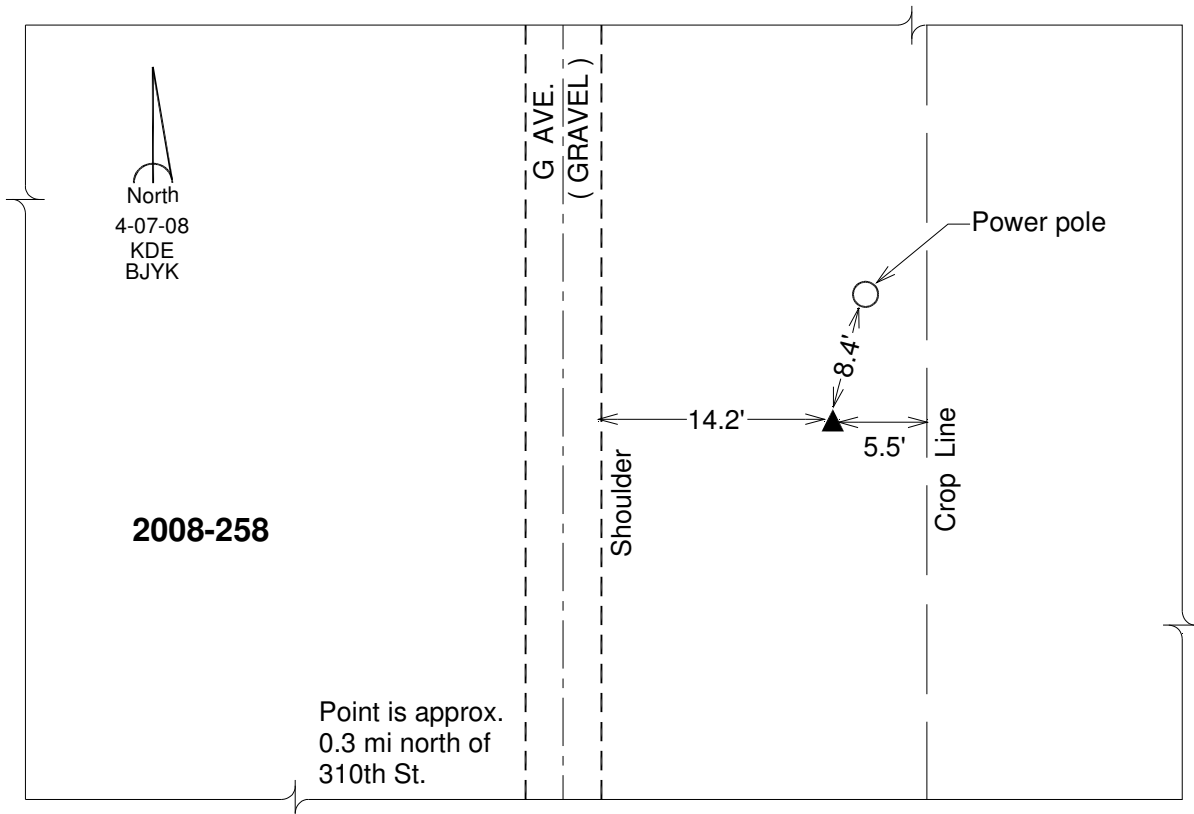
Northing: **571615.27**sft Easting: **2001105.78**sft

Orthometric Height: **865.78**sft Ellipsoid Height: **760.01**sft **Geoid03**

Latitude: **41°33'41.09738"N** Longitude: **92°10'55.11127"W**

Mapping Angle: **0°52'05"** Combination Scale Factor: **0.99993186**

**Monument Type:** Berntsen 3/4" Top Security Rod Monument with a 2-1/2" dia. domed survey cap and permanent magnet encased in a white PVC pipe with a NGS style alum. access cover.



*This document was prepared by DCI and GBC for use by Iowa County, Iowa.*