

Iowa County, Iowa
Iowa South Zone (1402)
Horiz. Datum: NAD83(NSRS2007)
Vert. Datum: NAVD 1988
US Survey Feet
2008

Point Name: **4259**

Designation: 2008-259 Iowa Co GPS Control Pt

Northing: **569001.53**sft Easting: **2017620.57**sft

Orthometric Height: **795.84**sft Ellipsoid Height: **689.85**sft **Geoid03**

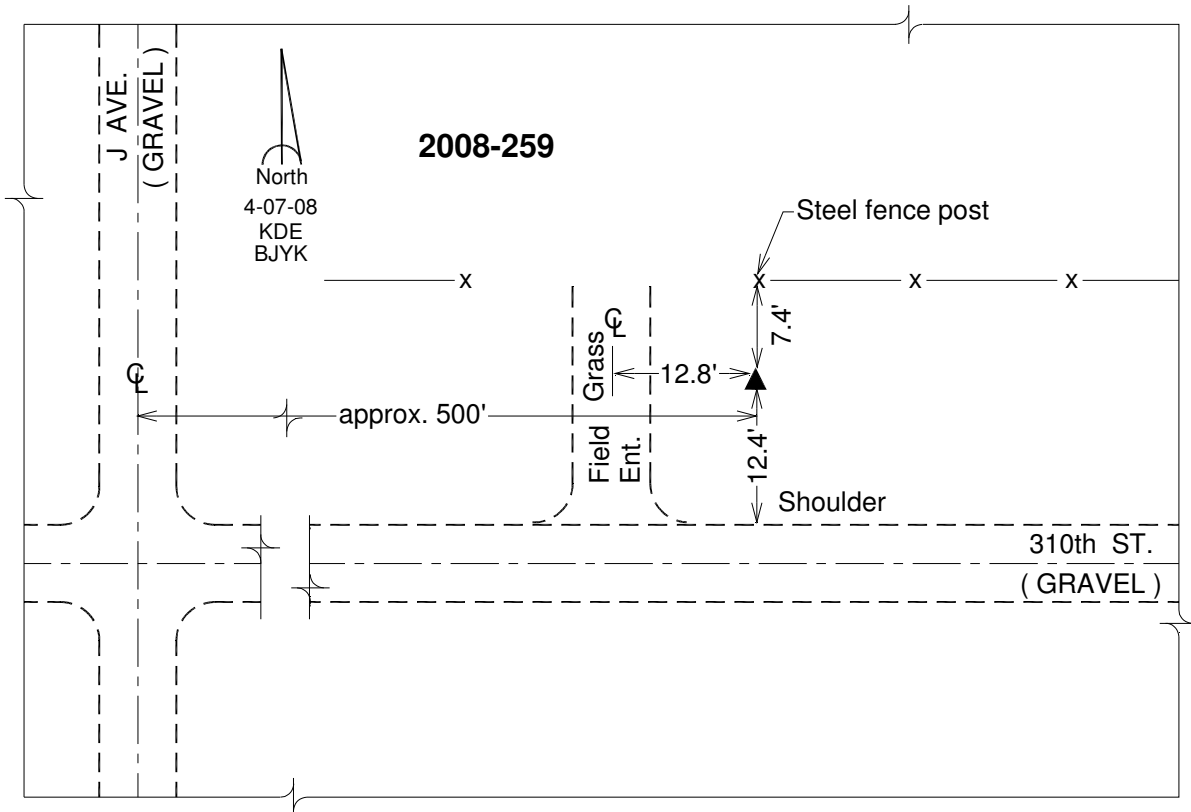
Latitude: **41°33'12.74801"N**

Longitude: **92°07'18.43847"W**

Mapping Angle: **0°54'28"**

Combination Scale Factor: **0.99993436**

Monument Type: Berntsen 3/4" Top Security Rod Monument with a 2-1/2" dia. domed survey cap and permanent magnet encased in a white PVC pipe with a NGS style alum. access cover.



This document was prepared by DCI and GBC for use by Iowa County, Iowa.