

Iowa County, Iowa
 Iowa South Zone (1402)
 Horiz. Datum: NAD83(NSRS2007)
 Vert. Datum: NAVD 1988
 US Survey Feet
2008

Point Name: **4261**

Designation: 2008-261 Iowa Co GPS Control Pt

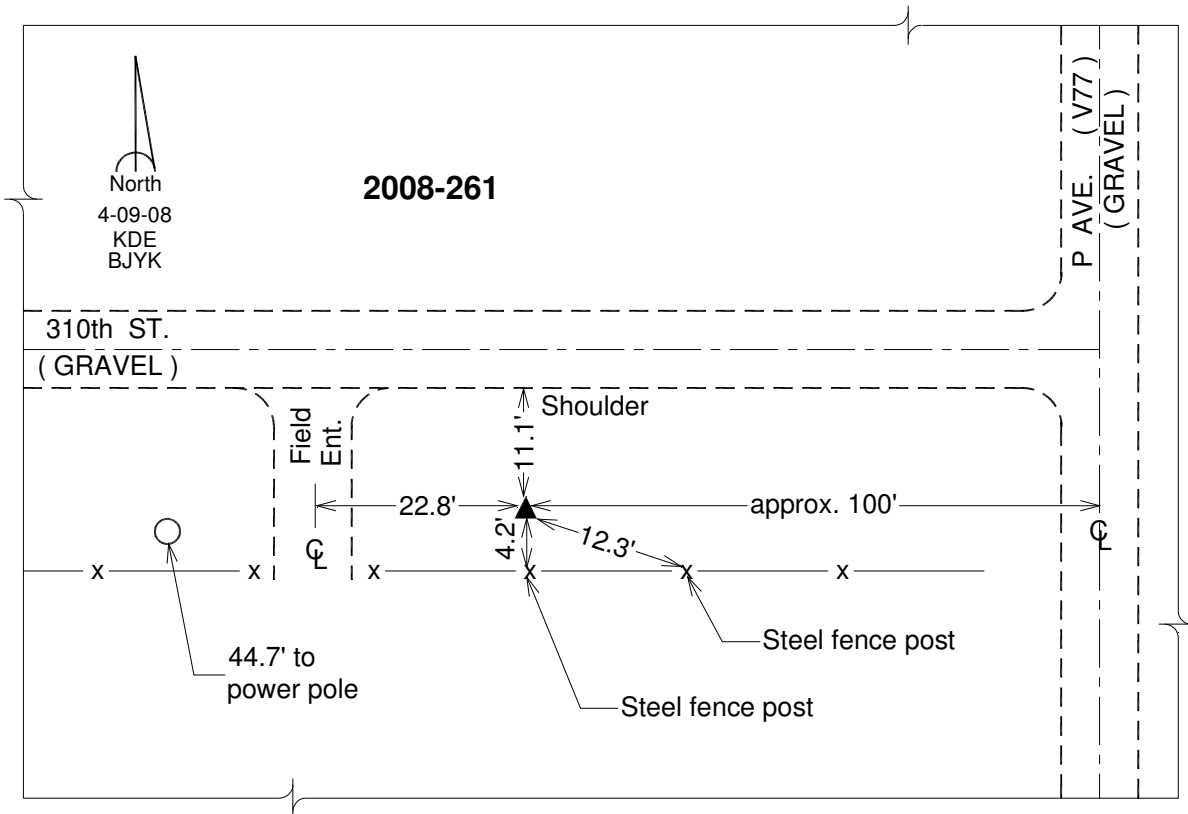
Northing: **569687.67**sft Easting: **2049791.07**sft

Orthometric Height: **790.35**sft Ellipsoid Height: **683.95**sft **Geoid03**

Latitude: **41°33'14.27554"N** Longitude: **92°00'15.20791"W**

Mapping Angle: **0°59'07"** Combination Scale Factor: **0.99993469**

Monument Type: Berntsen 3/4" Top Security Rod Monument with a 2-1/2" dia. domed survey cap and permanent magnet encased in a white PVC pipe with a NGS style alum. access cover.



This document was prepared by DCI and GBC for use by Iowa County, Iowa.