

Iowa County, Iowa
 Iowa South Zone (1402)
 Horiz. Datum: NAD83(NSRS2007)
 Vert. Datum: NAVD 1988
 US Survey Feet
2008

Point Name: **4263**

Designation: 2008-263 Iowa Co GPS Control Pt

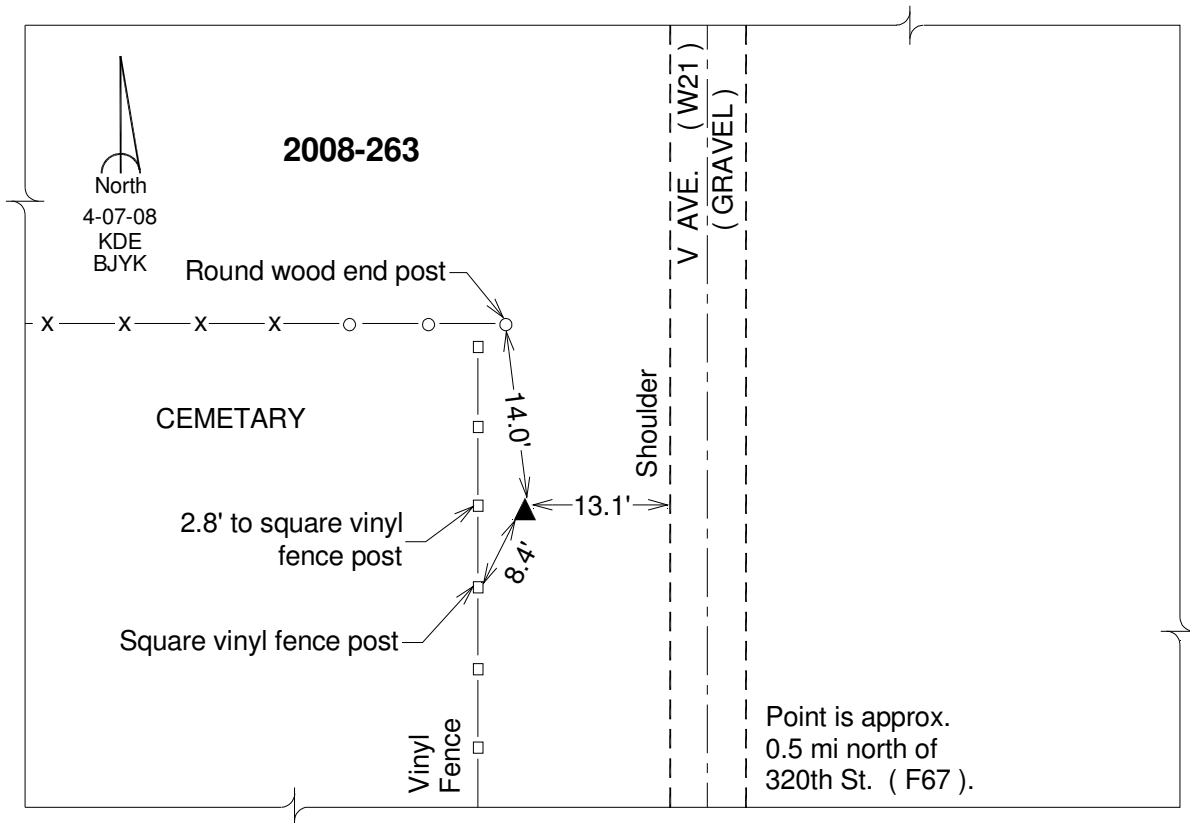
Northing: **567934.13**sft Easting: **2082160.38**sft

Orthometric Height: **800.88**sft Ellipsoid Height: **694.20**sft **Geoid03**

Latitude: **41°32'51.23697"N** Longitude: **91°53'09.95344"W**

Mapping Angle: **1°03'47"** Combination Scale Factor: **0.99993351**

Monument Type: Berntsen 3/4" Top Security Rod Monument with a 2-1/2" dia. domed survey cap and permanent magnet encased in a white PVC pipe with a NGS style alum. access cover.



This document was prepared by DCI and GBC for use by Iowa County, Iowa.