

**Iowa County, Iowa**  
Iowa South Zone (1402)  
Horiz. Datum: NAD83(NSRS2007)  
Vert. Datum: NAVD 1988  
US Survey Feet  
**2008**

Point Name: **4307**

**Designation:** USGS 3rd order vertical control station "No. 48"

Northing: **658360.50**sft    Easting: **2030262.92**sft

Orthometric Height: **737.49**sft    Ellipsoid Height: **632.35**sft    **Geoid03**

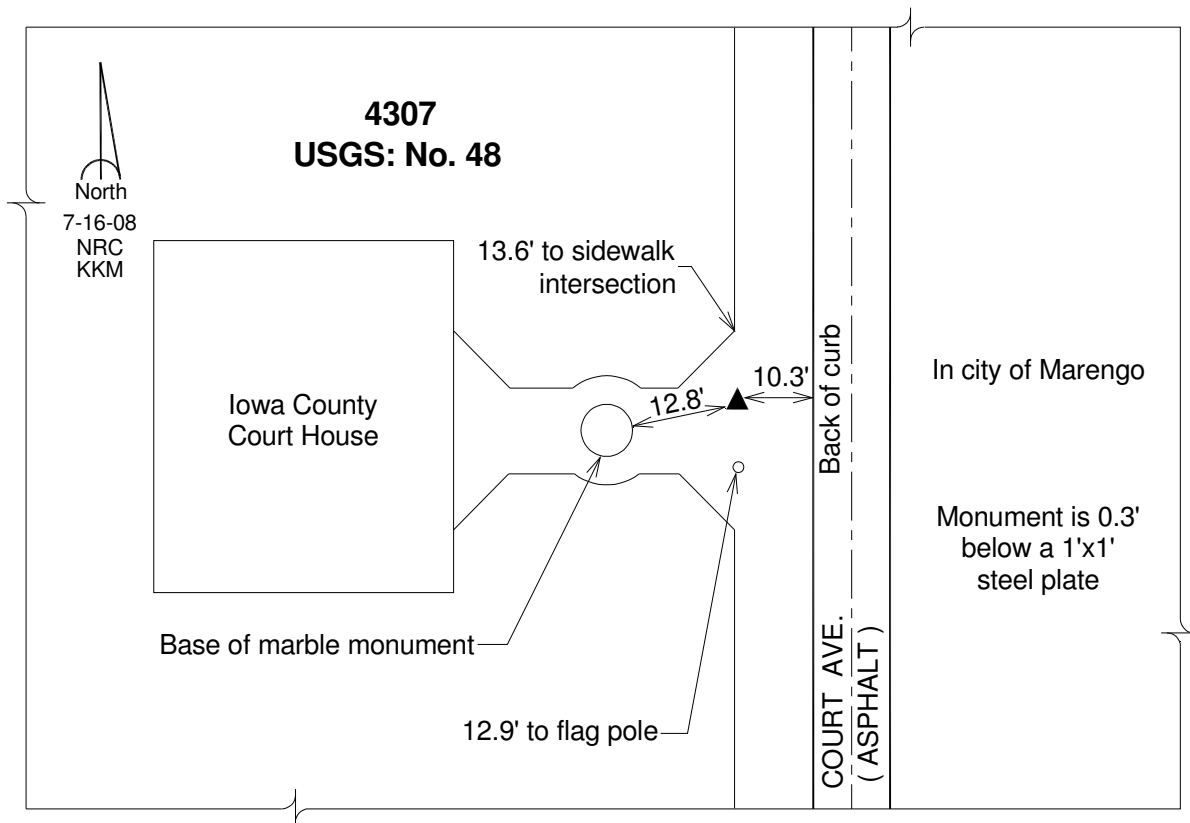
Latitude: **41°47'53.45038"N**

Longitude: **92°04'12.85787"W**

Mapping Angle: **0°56'30"**

Combination Scale Factor: **0.99997250**

**Monument Type:** Station is a standard bench mark disk stamped "No. 48" and set in the top of a concrete post approx. 0.3ft deep.



*This document was prepared by DCI and GBC for use by Iowa County, Iowa.*