

**Iowa County, Iowa**  
 Iowa South Zone (1402)  
 Horiz. Datum: NAD83(NSRS2007)  
 Vert. Datum: NAVD 1988  
 US Survey Feet  
**2008**

Point Name: **4308**

**Designation:** NGS 2nd order vertical control "Q 85" PID:MH0026

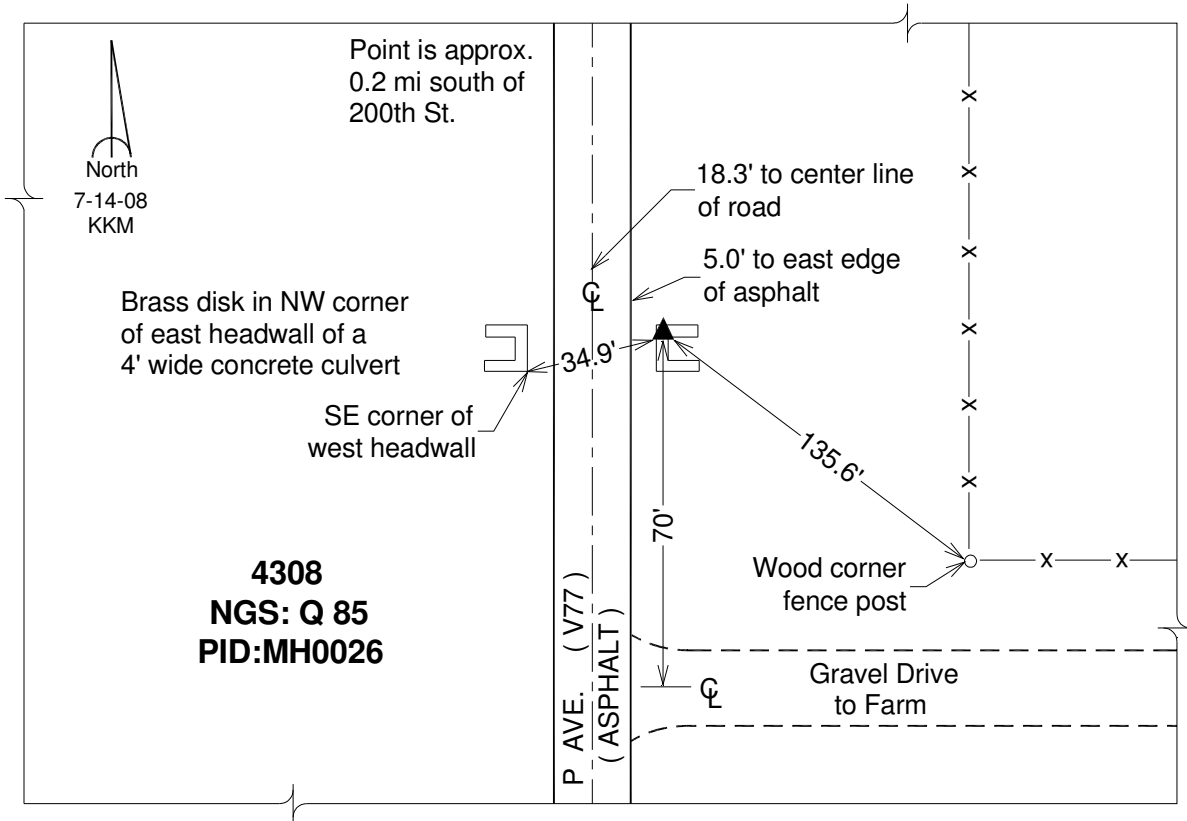
Northing: **627627.13**sft    Easting: **2047528.47**sft

Orthometric Height: **887.28**sft    Ellipsoid Height: **781.57**sft    **Geoid03**

Latitude: **41°42'47.00291"N**                      Longitude: **92°00'31.89998"W**

Mapping Angle: **0°58'56"**                      Combination Scale Factor: **0.99995098**

**Monument Type:** Station is a standard bench mark disk stamped "Q 85 1934" and set in the north end of the east headwall of a culvert.



*This document was prepared by DCI and GBC for use by Iowa County, Iowa.*