

Iowa County, Iowa  
Iowa South Zone (1402)  
Horiz. Datum: NAD83(NSRS2007)  
Vert. Datum: NAVD 1988  
US Survey Feet  
2008

Point Name: **4311**

**Designation:** NGS 2nd order vertical control station "F 85" PID:MG0618

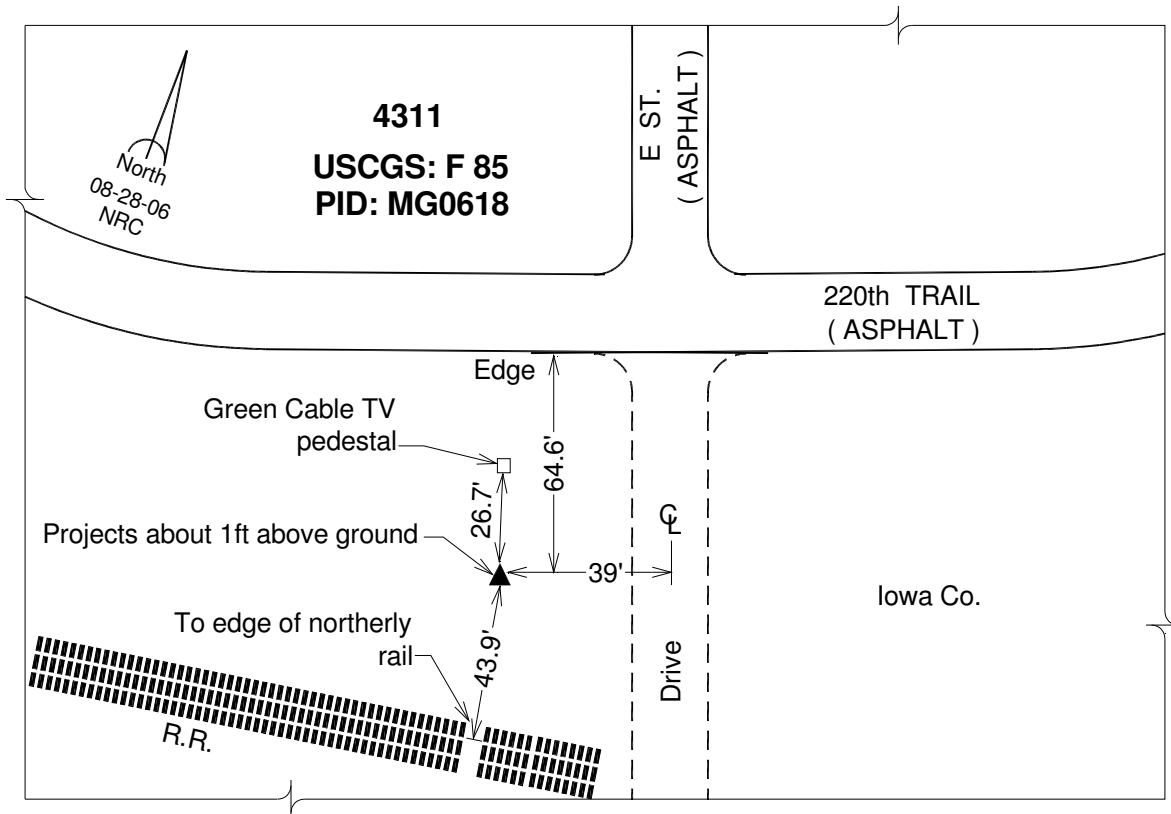
Northing: **662809.59sft** Easting: **2090746.70sft**

Orthometric Height: **735.89sft** Ellipsoid Height: **630.14sft** **Geoid03**

Latitude: **41°48'26.81295"N** Longitude: **91°50'53.35399"W**

Mapping Angle: **1°05'17"** Combination Scale Factor: **0.99997430**

**Monument Type:** Station is a standard bench mark disk stamped "F 85 1934" and set in the top of a concrete post approx. 1ft above ground.



*This document was prepared by DCI and GBC for use by Iowa County, Iowa.*