

Iowa County, Iowa
Iowa South Zone (1402)
Horiz. Datum: NAD83(NSRS2007)
Vert. Datum: NAVD 1988
US Survey Feet
2008

Point Name: **4312**

Designation: FBN and 1st order vertical control station "57 27" PID:MG0566

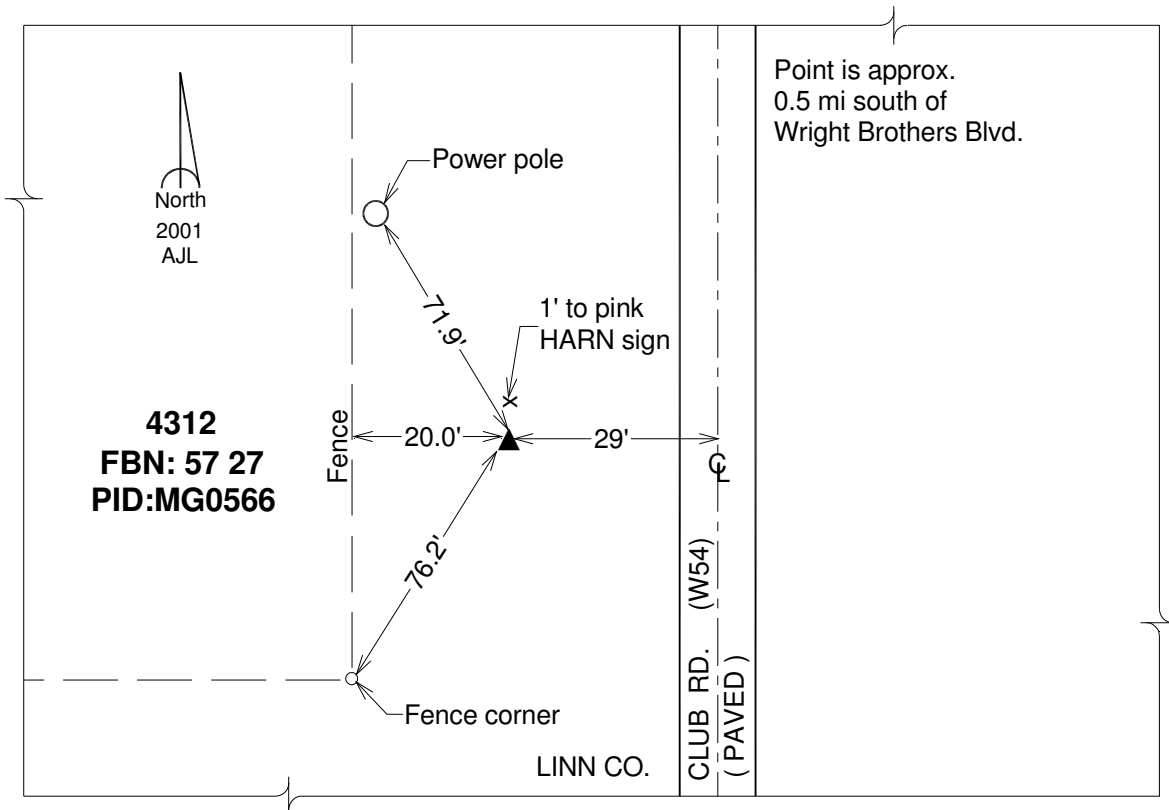
Northing: **691549.72**sft Easting: **2145057.69**sft

Orthometric Height: **810.72**sft Ellipsoid Height: **704.61**sft **Geoid03**

Latitude: **41°52'59.87118"N** Longitude: **91°38'48.29314"W**

Mapping Angle: **1°13'15"** Combination Scale Factor: **0.99998566**

Monument Type: Station is a standard CGS+SS survey disk stamped "57 27" and set in the top of a concrete post.



This document was prepared by DCI and GBC for use by Iowa County, Iowa.