

Iowa County, Iowa
Iowa South Zone (1402)
Horiz. Datum: NAD83(NSRS2007)
Vert. Datum: NAVD 1988
US Survey Feet
2008

Point Name: **4401**

Designation: Rebar in concrete monument (By Dallman Surveying in 2006)

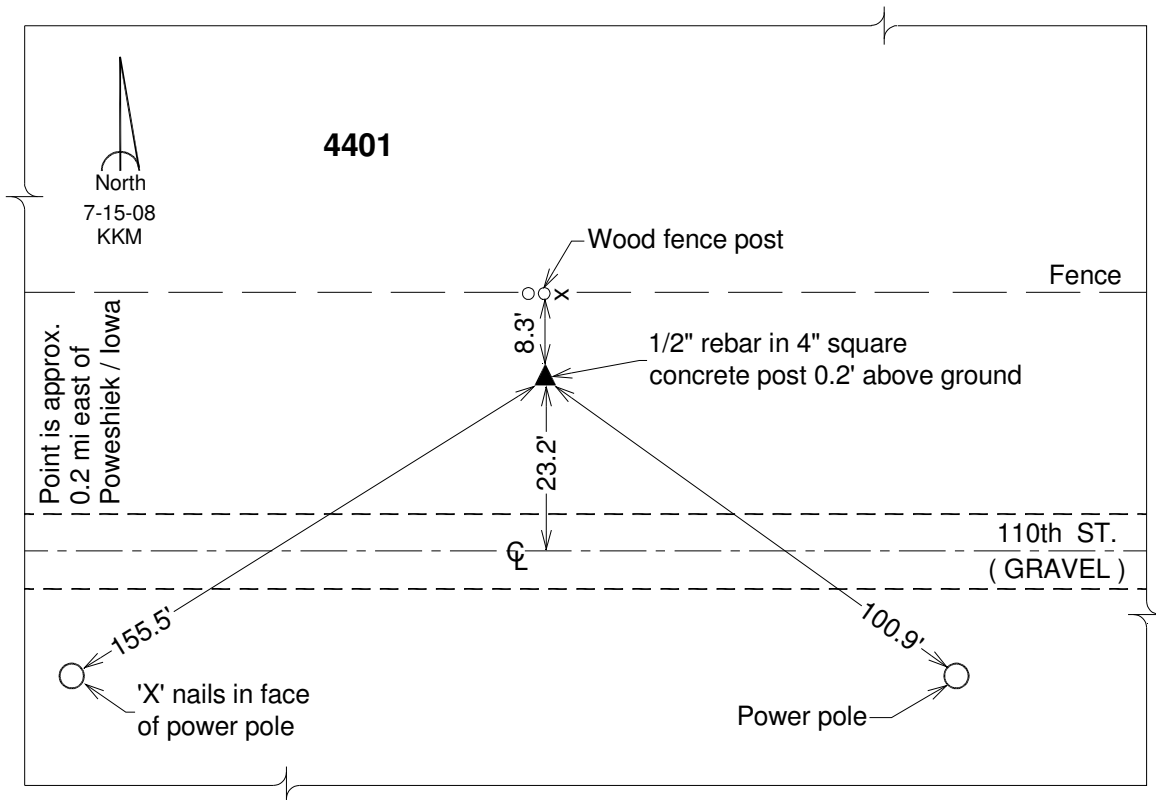
Northing: **675776.27sft** Easting: **1968726.90sft**

Orthometric Height: **844.29sft** Ellipsoid Height: **739.90sft** **Geoid03**

Latitude: **41°50'54.69032"N** Longitude: **92°17'42.01948"W**

Mapping Angle: **0°47'37"** Combination Scale Factor: **0.99997692**

Monument Type: Station is a rebar set in a concrete post.



This document was prepared by DCI and GBC for use by Iowa County, Iowa.