

**Jasper County, Iowa**  
Iowa South Zone (1402)  
Horiz. Datum: NAD83(1996)  
Vert. Datum: NAVD 1988  
US Survey Feet  
**2005**

Point Name: **A02**

**Designation:** Jasper County GPS Monument A02-2005

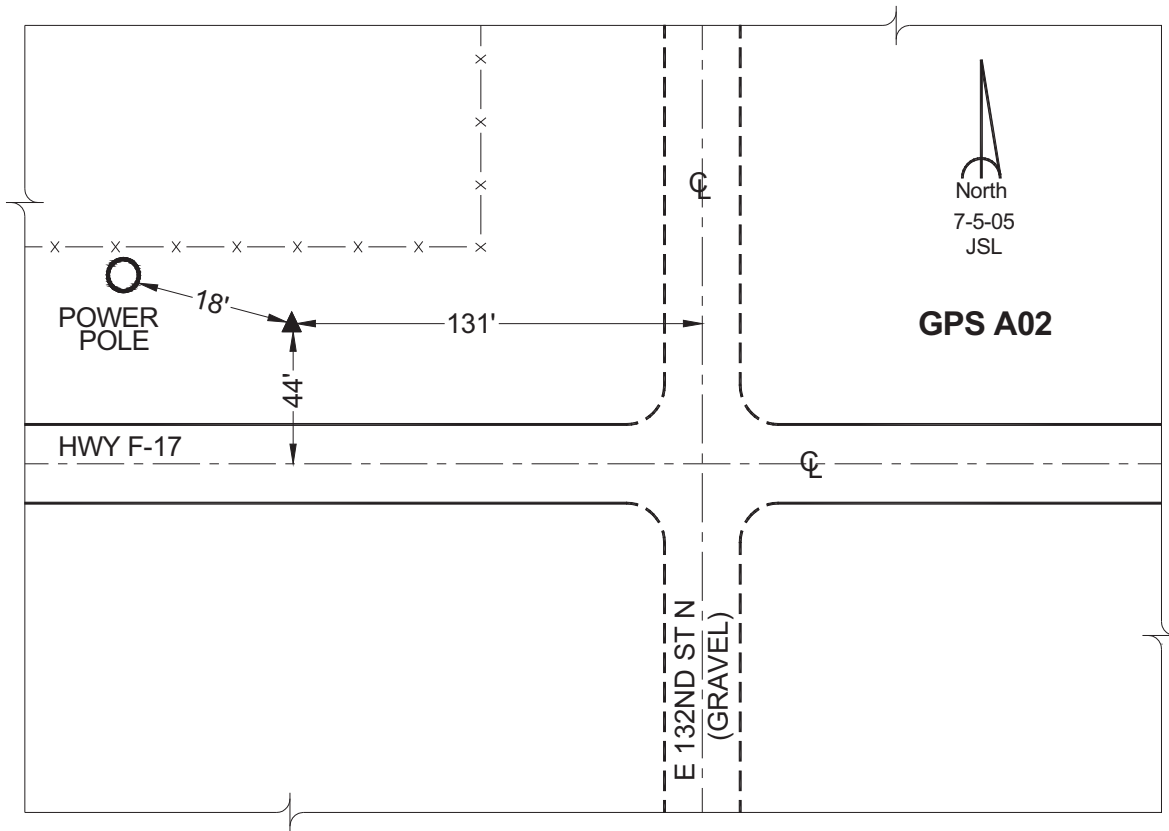
Northing: **663702.39sft** Easting: **1824468.03sft**

Orthometric Height: **952.76sft** Ellipsoid Height: **848.09sft** **Geoid03**

Latitude: **41°49'10.82024"** Longitude: **92°49'29.25132"**

Mapping Angle: **0°26'41"** Combination Scale Factor: **0.99996619**

**Monument Type:** Cast in-place concrete monument with aluminum disk.



*This document was prepared by GBC and DCI for use by Jasper County, Iowa.*