

**Jasper County, Iowa**  
Iowa South Zone (1402)  
Horiz. Datum: NAD83(1996)  
Vert. Datum: NAVD 1988  
US Survey Feet  
**2005**

Point Name: **A03**

**Designation:** Jasper County GPS Monument A03-2005

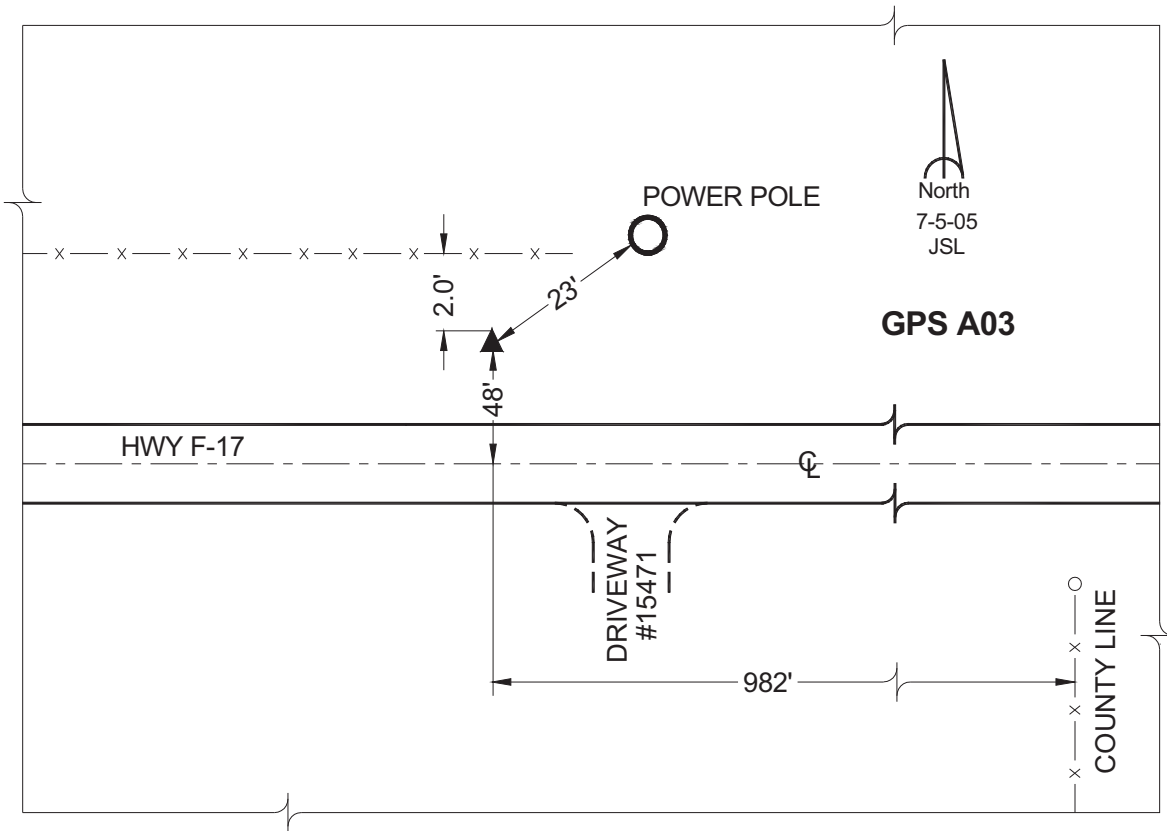
Northing: **663830.12sft**    Easting: **1839491.12sft**

Orthometric Height: **1017.60sft**    Ellipsoid Height: **912.83sft**    **Geoid03**

Latitude: **41°49'10.88302"**    Longitude: **92°46'10.83761"**

Mapping Angle: **0°28'52"**    Combination Scale Factor: **0.99996310**

**Monument Type:** Cast in-place concrete monument with aluminum disk.



*This document was prepared by GBC and DCI for use by Jasper County, Iowa.*