

**Jasper County, Iowa**  
Iowa South Zone (1402)  
Horiz. Datum: NAD83(1996)  
Vert. Datum: NAVD 1988  
US Survey Feet  
**2005**

Point Name: **B01**

**Designation:** Jasper County GPS Monument B01-2005

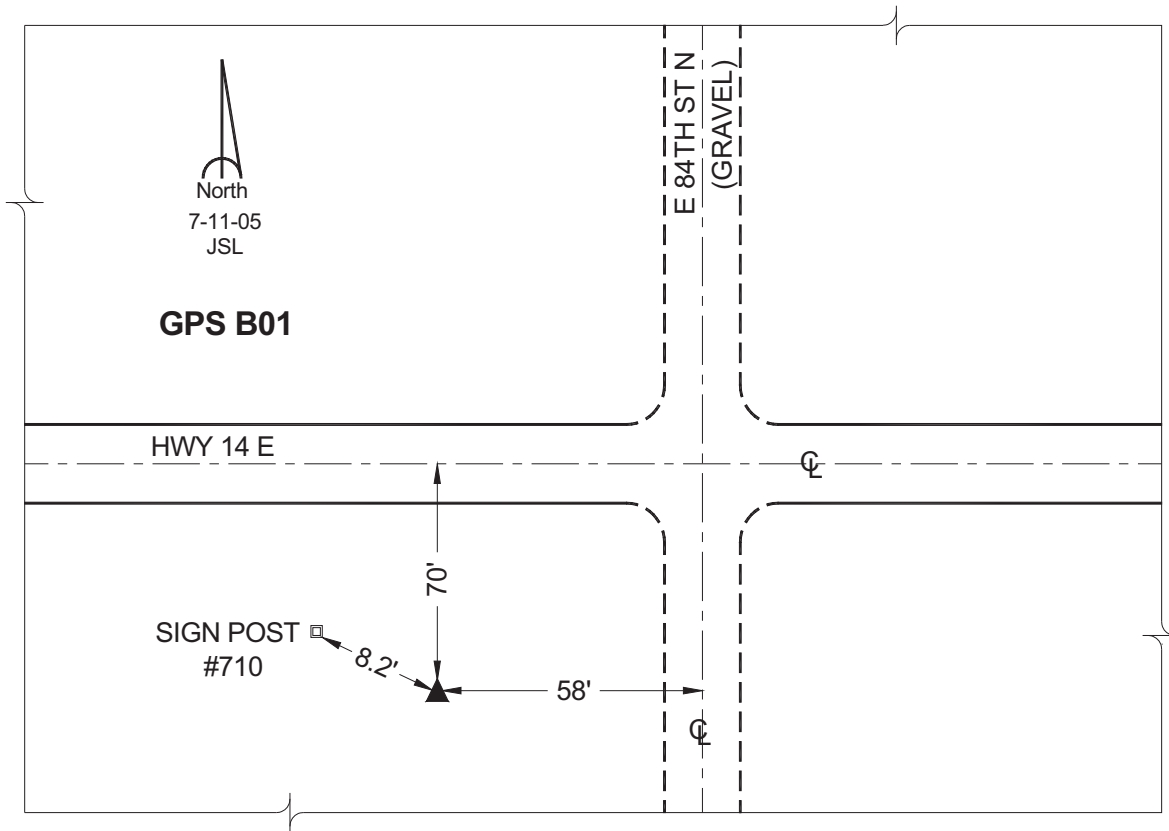
Northing: **663417.63sft**    Easting: **1792534.02sft**

Orthometric Height: **960.53sft**    Ellipsoid Height: **856.14sft**    **Geoid03**

Latitude: **41°49'10.24362"**    Longitude: **92°56'31.01212"**

Mapping Angle: **0°22'03"**    Combination Scale Factor: **0.99996577**

**Monument Type:** Cast in-place concrete monument with aluminum disk.



*This document was prepared by GBC and DCI for use by Jasper County, Iowa.*