

**Jasper County, Iowa**  
Iowa South Zone (1402)  
Horiz. Datum: NAD83(1996)  
Vert. Datum: NAVD 1988  
US Survey Feet  
**2005**

Point Name: **B02**

**Designation:** Jasper County GPS Monument B02-2005

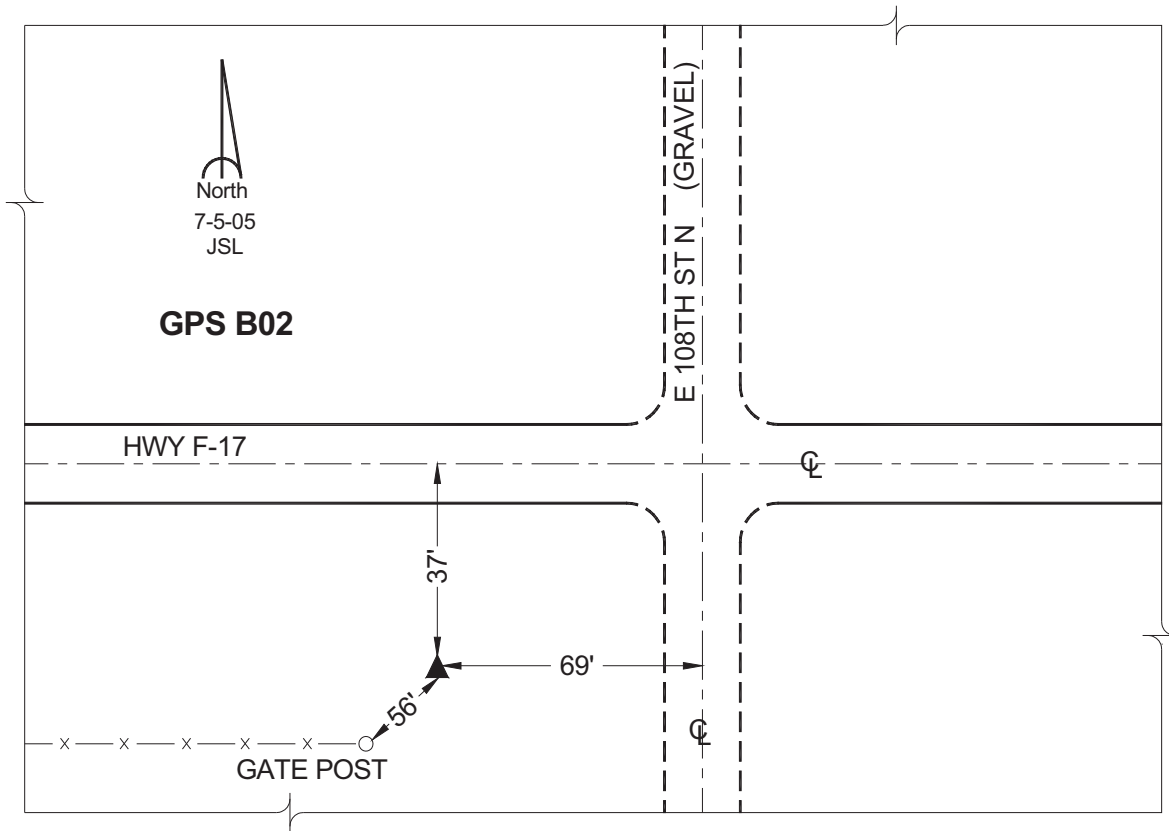
Northing: **663581.72sft**    Easting: **1808438.07sft**

Orthometric Height: **996.84sft**    Ellipsoid Height: **892.33sft**    **Geoid03**

Latitude: **41°49'10.80389"**    Longitude: **92°53'00.96136"**

Mapping Angle: **0°24'22"**    Combination Scale Factor: **0.99996408**

**Monument Type:** Cast in-place concrete monument with aluminum disk.



*This document was prepared by GBC and DCI for use by Jasper County, Iowa.*