

Jasper County, Iowa
Iowa South Zone (1402)
Horiz. Datum: NAD83(1996)
Vert. Datum: NAVD 1988
US Survey Feet
2005

Point Name: **C01**

Designation: Jasper County GPS Monument C01-2005

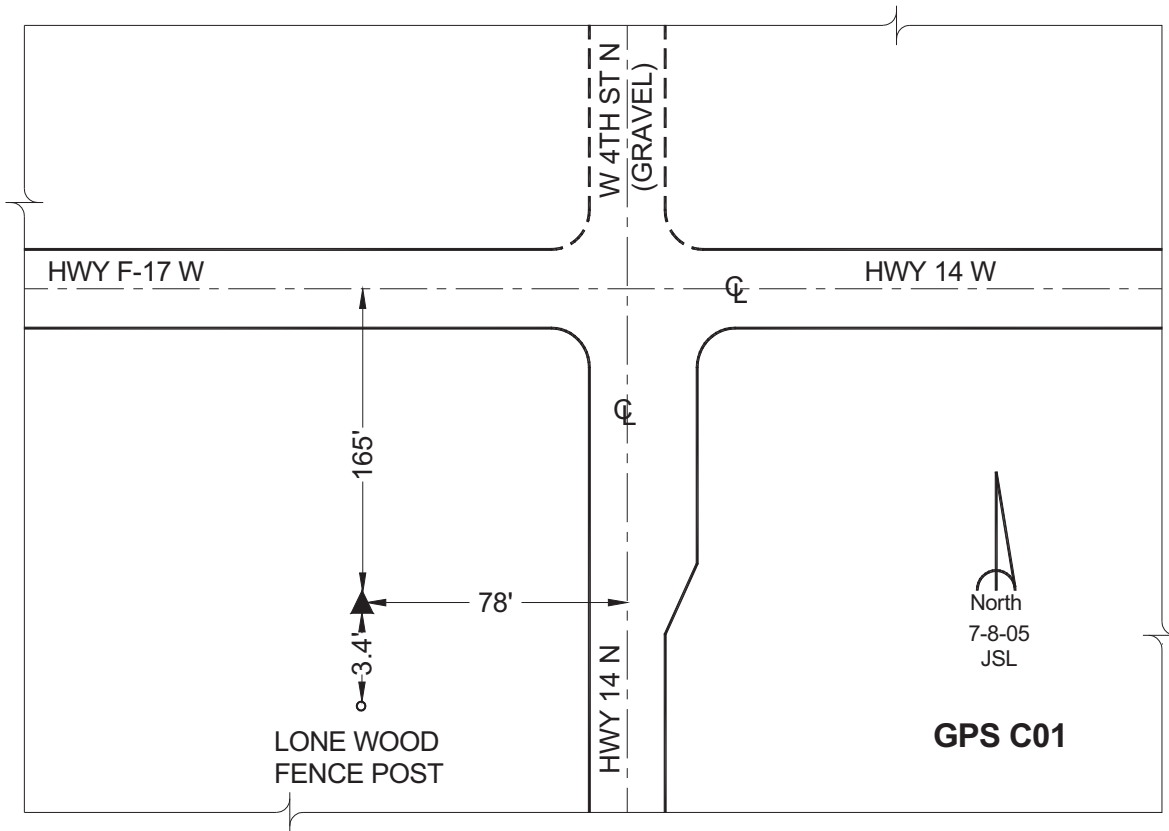
Northing: **663306.29sft** Easting: **1760727.07sft**

Orthometric Height: **883.69sft** Ellipsoid Height: **779.55sft** **Geoid03**

Latitude: **41°49'10.94888"** Longitude: **93°03'31.08033"**

Mapping Angle: **0°17'27"** Combination Scale Factor: **0.99996946**

Monument Type: Cast in-place concrete monument with aluminum disk.



This document was prepared by GBC and DCI for use by Jasper County, Iowa.