

**Jasper County, Iowa**  
Iowa South Zone (1402)  
Horiz. Datum: NAD83(1996)  
Vert. Datum: NAVD 1988  
US Survey Feet  
**2005**

Point Name: **C02**

**Designation:** Jasper County GPS Monument C02-2005

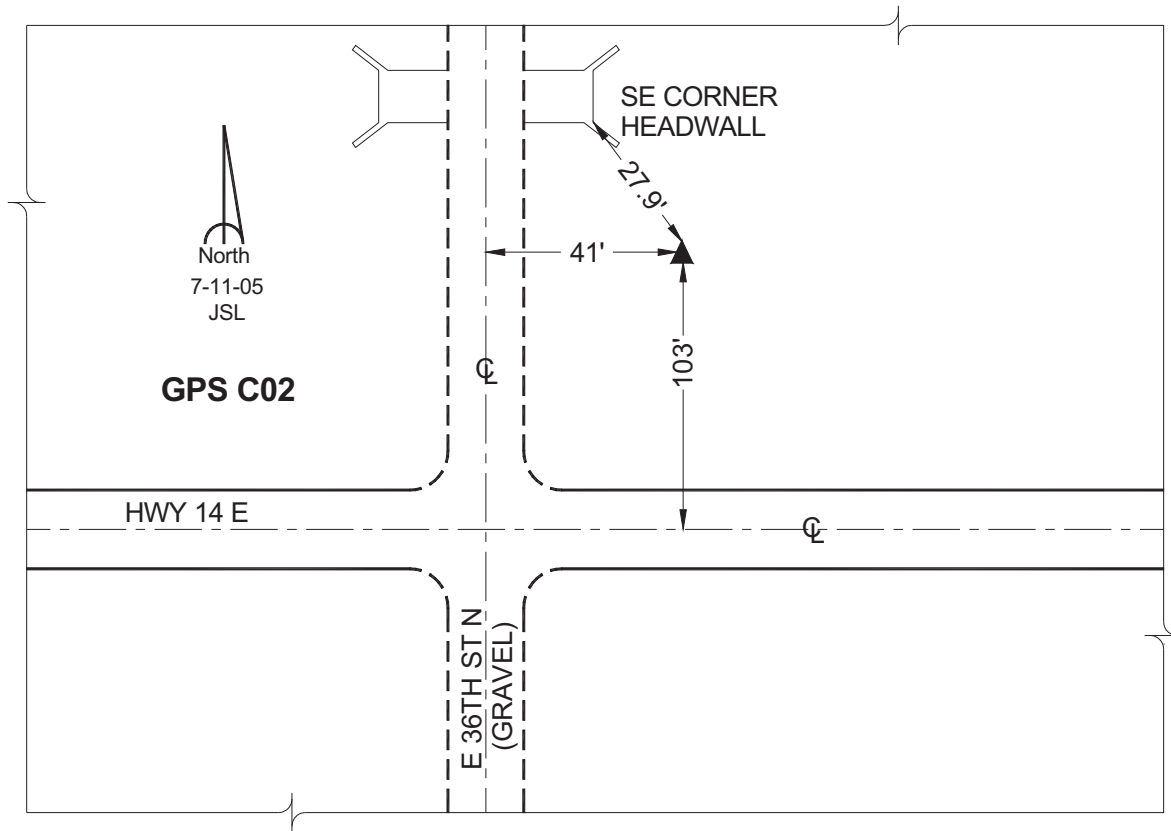
Northing: **663630.89sft**    Easting: **1774118.77sft**

Orthometric Height: **940.73sft**    Ellipsoid Height: **836.48sft**    **Geoid03**

Latitude: **41°49'13.44695"**    Longitude: **93°00'34.19779"**

Mapping Angle: **0°19'23"**    Combination Scale Factor: **0.99996688**

**Monument Type:** Cast in-place concrete monument with aluminum disk.



*This document was prepared by GBC and DCI for use by Jasper County, Iowa.*