

Jasper County, Iowa
Iowa South Zone (1402)
Horiz. Datum: NAD83(1996)
Vert. Datum: NAVD 1988
US Survey Feet
2005

Point Name: **D03**

Designation: Jasper County GPS Monument D03-2005

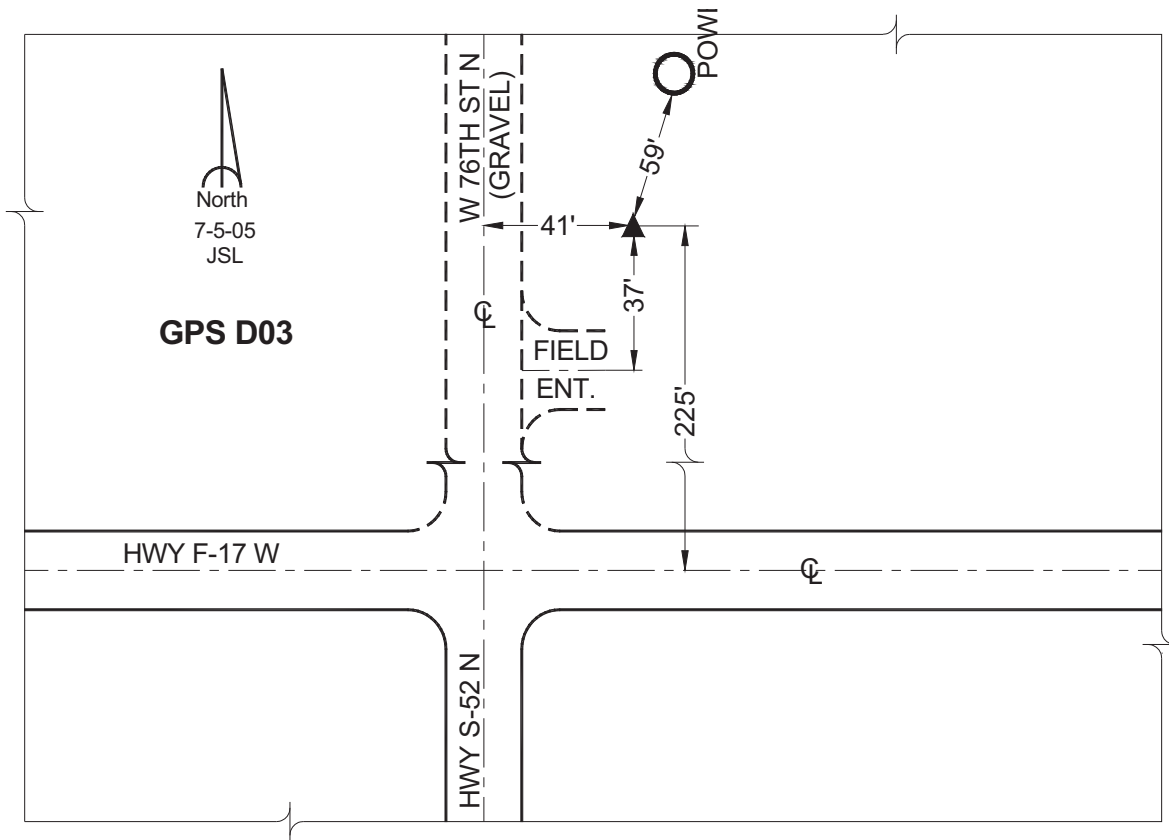
Northing: **663528.25sft** Easting: **1729358.00sft**

Orthometric Height: **955.70sft** Ellipsoid Height: **851.97sft** **Geoid03**

Latitude: **41°49'14.50909"** Longitude: **93°10'25.35094"**

Mapping Angle: **0°12'54"** Combination Scale Factor: **0.99996620**

Monument Type: Cast in-place concrete monument with aluminum disk.



This document was prepared by GBC and DCI for use by Jasper County, Iowa.