

Jasper County, Iowa
Iowa South Zone (1402)
Horiz. Datum: NAD83(1996)
Vert. Datum: NAVD 1988
US Survey Feet
2005

Point Name: **D04**

Designation: Jasper County GPS Monument D04-2005

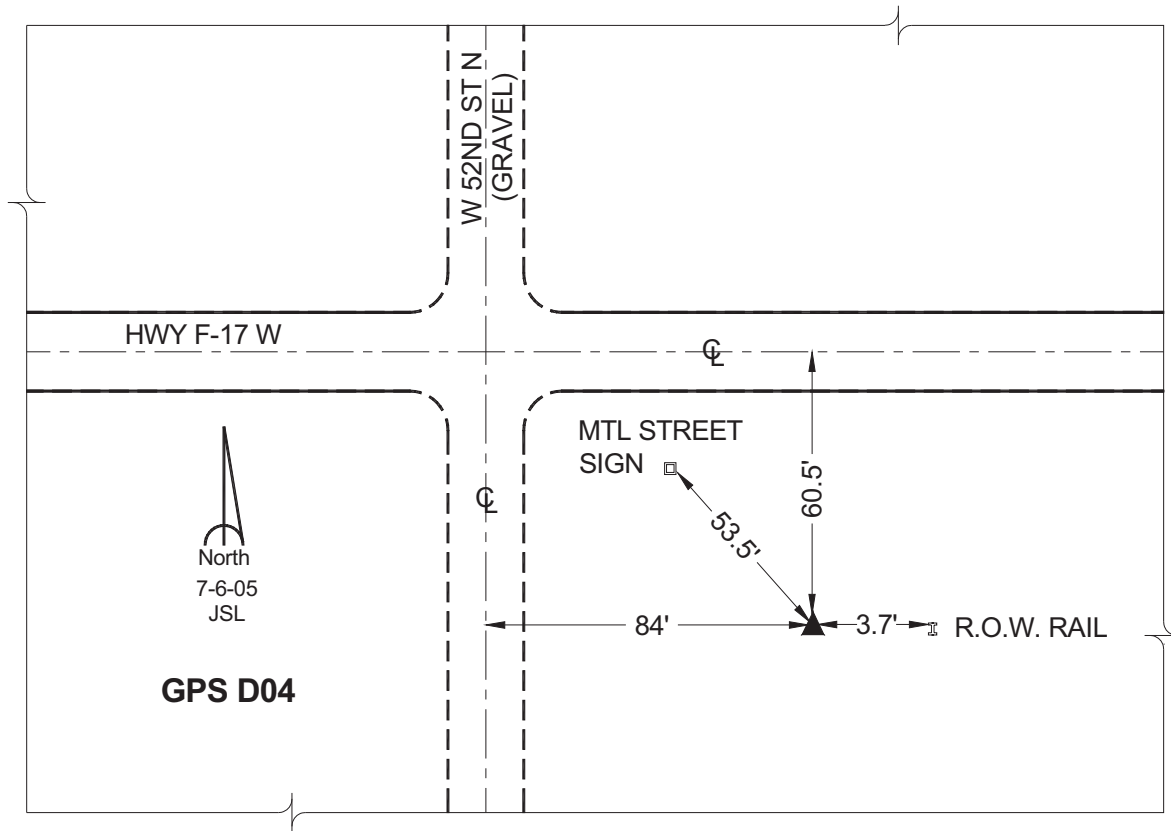
Northing: **663297.14sft** Easting: **1745121.08sft**

Orthometric Height: **1010.10sft** Ellipsoid Height: **906.15sft** **Geoid03**

Latitude: **41°49'11.58999"** Longitude: **93°06'57.18375"**

Mapping Angle: **0°15'11"** Combination Scale Factor: **0.99996346**

Monument Type: Cast in-place concrete monument with aluminum disk.



This document was prepared by GBC and DCI for use by Jasper County, Iowa.