

**Jasper County, Iowa**  
Iowa South Zone (1402)  
Horiz. Datum: NAD83(1996)  
Vert. Datum: NAVD 1988  
US Survey Feet  
**2005**

Point Name: **E01**

**Designation:** Jasper County GPS Monument E01-2005

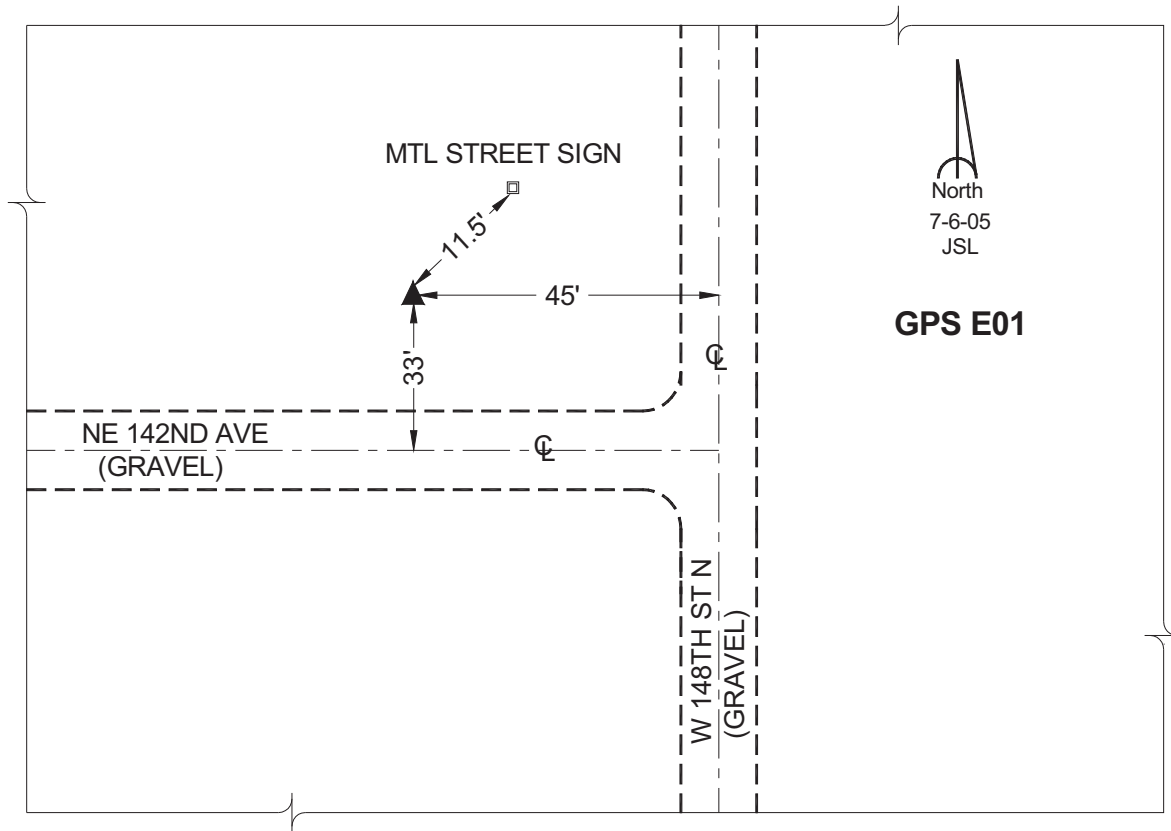
Northing: **663176.05sft**    Easting: **1681780.80sft**

Orthometric Height: **845.95sft**    Ellipsoid Height: **743.00sft**    **Geoid03**

Latitude: **41°49'12.32129"**    Longitude: **93°20'53.70953"**

Mapping Angle: **0°06'00"**    Combination Scale Factor: **0.99997128**

**Monument Type:** Cast in-place concrete monument with aluminum disk.



*This document was prepared by GBC and DCI for use by Jasper County, Iowa.*