

Jasper County, Iowa
Iowa South Zone (1402)
Horiz. Datum: NAD83(1996)
Vert. Datum: NAVD 1988
US Survey Feet
2005

Point Name: **E02**

Designation: Jasper County GPS Monument E02-2005

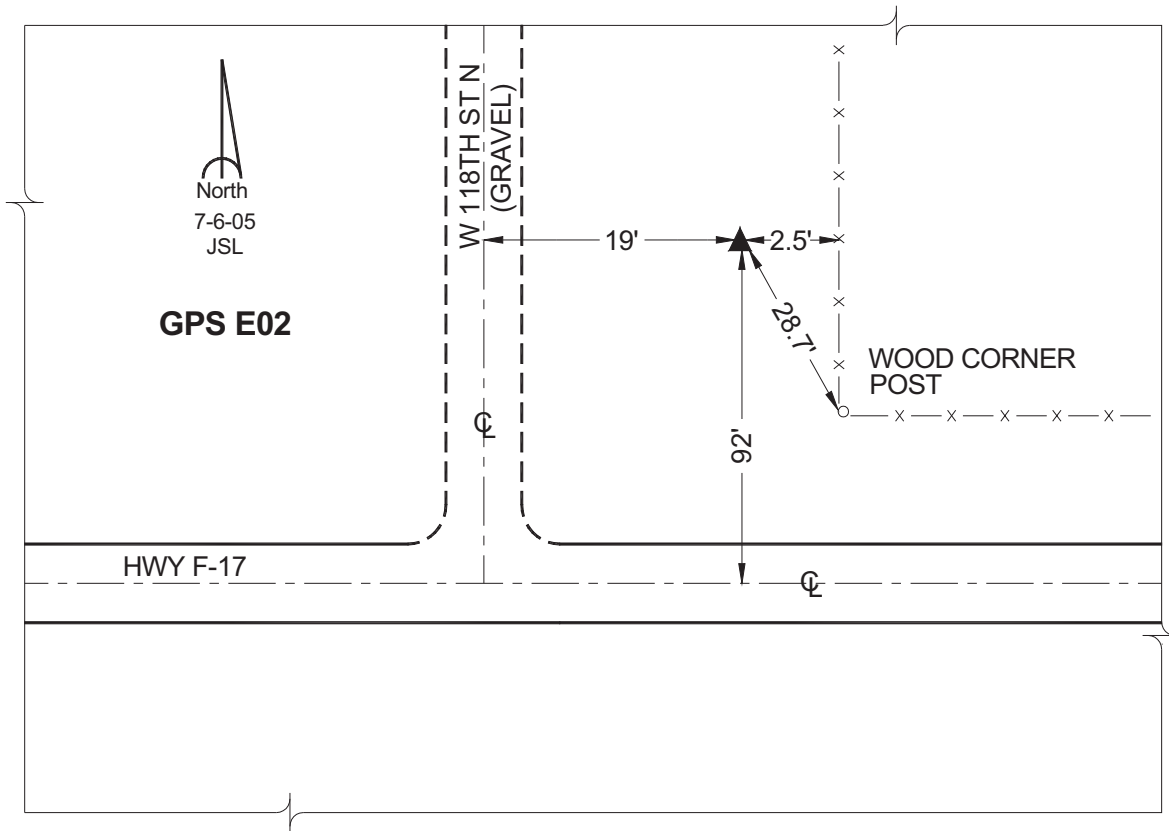
Northing: **663348.75sft** Easting: **1697648.57sft**

Orthometric Height: **949.74sft** Ellipsoid Height: **846.49sft** **Geoid03**

Latitude: **41°49'13.70141"** Longitude: **93°17'24.14128"**

Mapping Angle: **0°08'18"** Combination Scale Factor: **0.99996642**

Monument Type: Cast in-place concrete monument with aluminum disk.



This document was prepared by GBC and DCI for use by Jasper County, Iowa.