

Jasper County, Iowa
Iowa South Zone (1402)
Horiz. Datum: NAD83(1996)
Vert. Datum: NAVD 1988
US Survey Feet
2005

Point Name: **E03**

Designation: Jasper County GPS Monument E03-2005

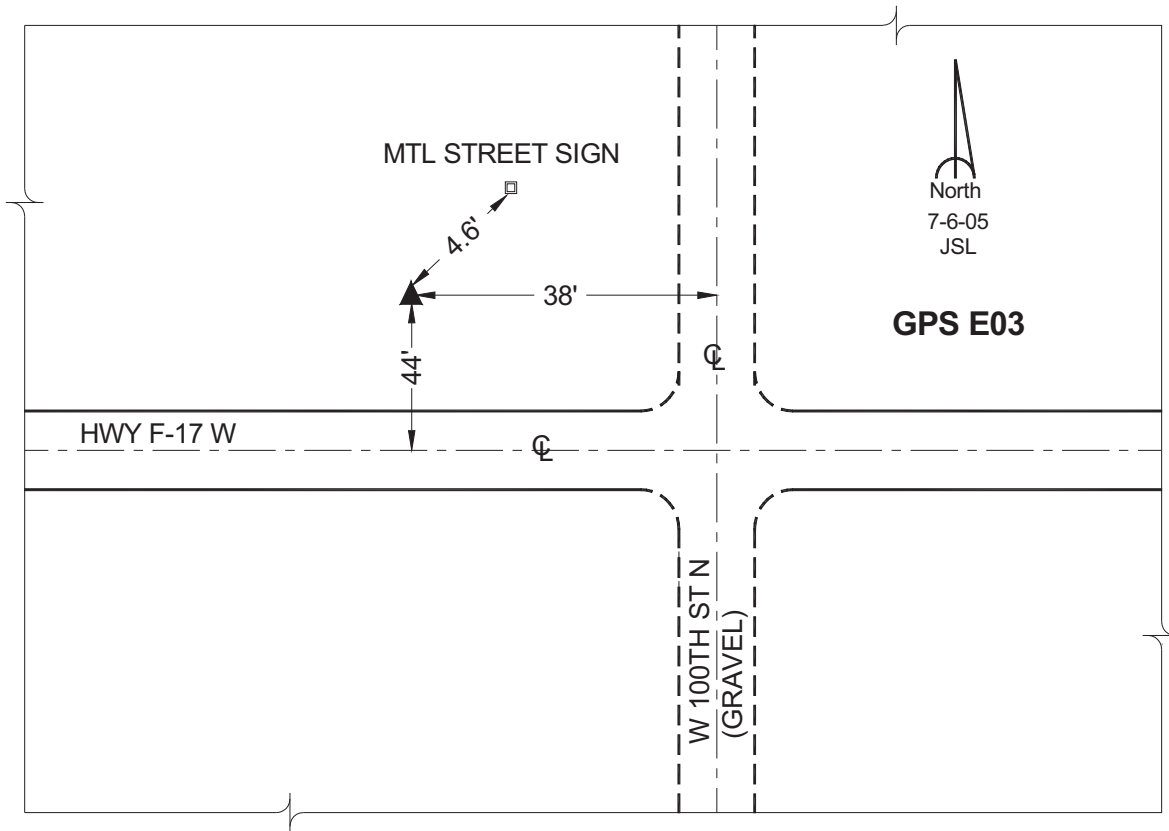
Northing: **663240.39sft** Easting: **1713458.16sft**

Orthometric Height: **849.39sft** Ellipsoid Height: **745.87sft** **Geoid03**

Latitude: **41°49'12.20185"** Longitude: **93°13'55.35046"**

Mapping Angle: **0°10'35"** Combination Scale Factor: **0.99997114**

Monument Type: Cast in-place concrete monument with aluminum disk.



This document was prepared by GBC and DCI for use by Jasper County, Iowa.