

**Jasper County, Iowa**  
Iowa South Zone (1402)  
Horiz. Datum: NAD83(1996)  
Vert. Datum: NAVD 1988  
US Survey Feet  
**2005**

Point Name: **F01**

**Designation:** Jasper County GPS Monument F01-2005

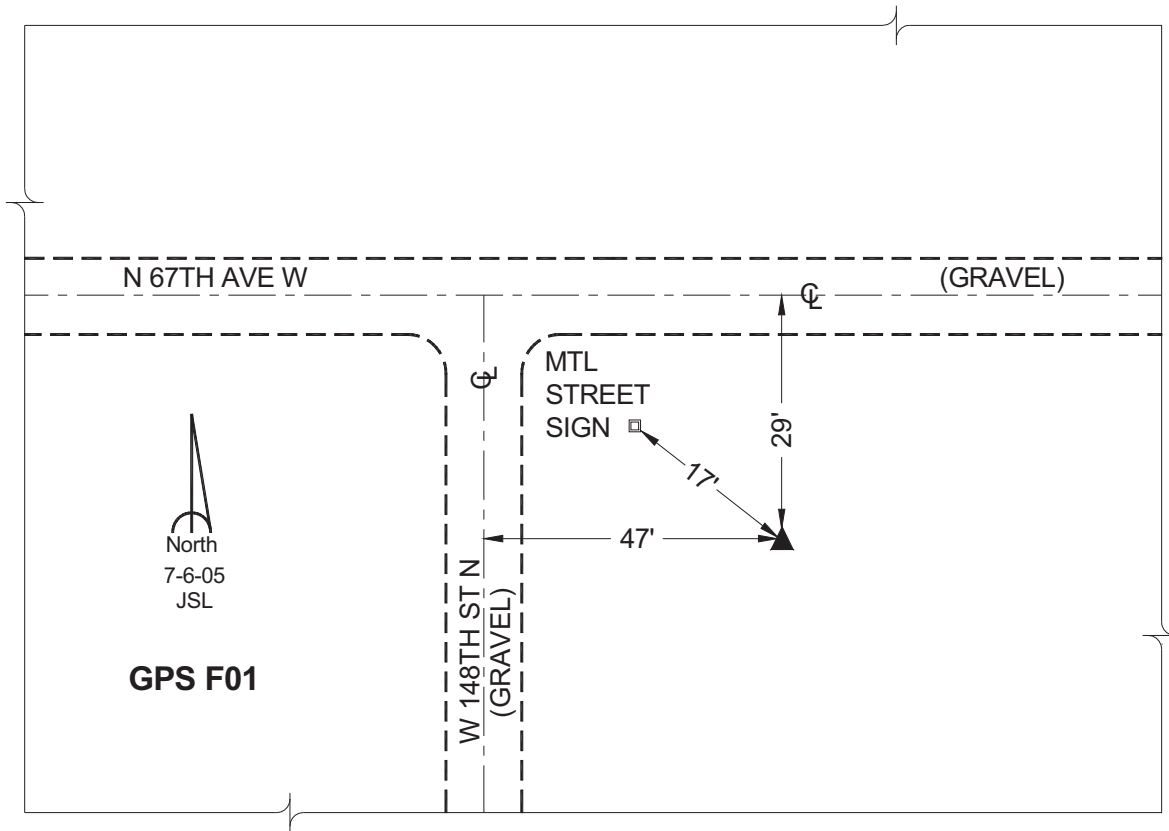
Northing: **647310.48sft**    Easting: **1681886.64sft**

Orthometric Height: **971.95sft**    Ellipsoid Height: **868.68sft**    **Geoid03**

Latitude: **41°46'35.58013"**    Longitude: **93°20'52.67806"**

Mapping Angle: **0°06'01"**    Combination Scale Factor: **0.99995735**

**Monument Type:** Cast in-place concrete monument with aluminum disk.



*This document was prepared by GBC and DCI for use by Jasper County, Iowa.*