

Jasper County, Iowa
Iowa South Zone (1402)
Horiz. Datum: NAD83(1996)
Vert. Datum: NAVD 1988
US Survey Feet
2005

Point Name: **F02**

Designation: Jasper County GPS Monument F02-2005

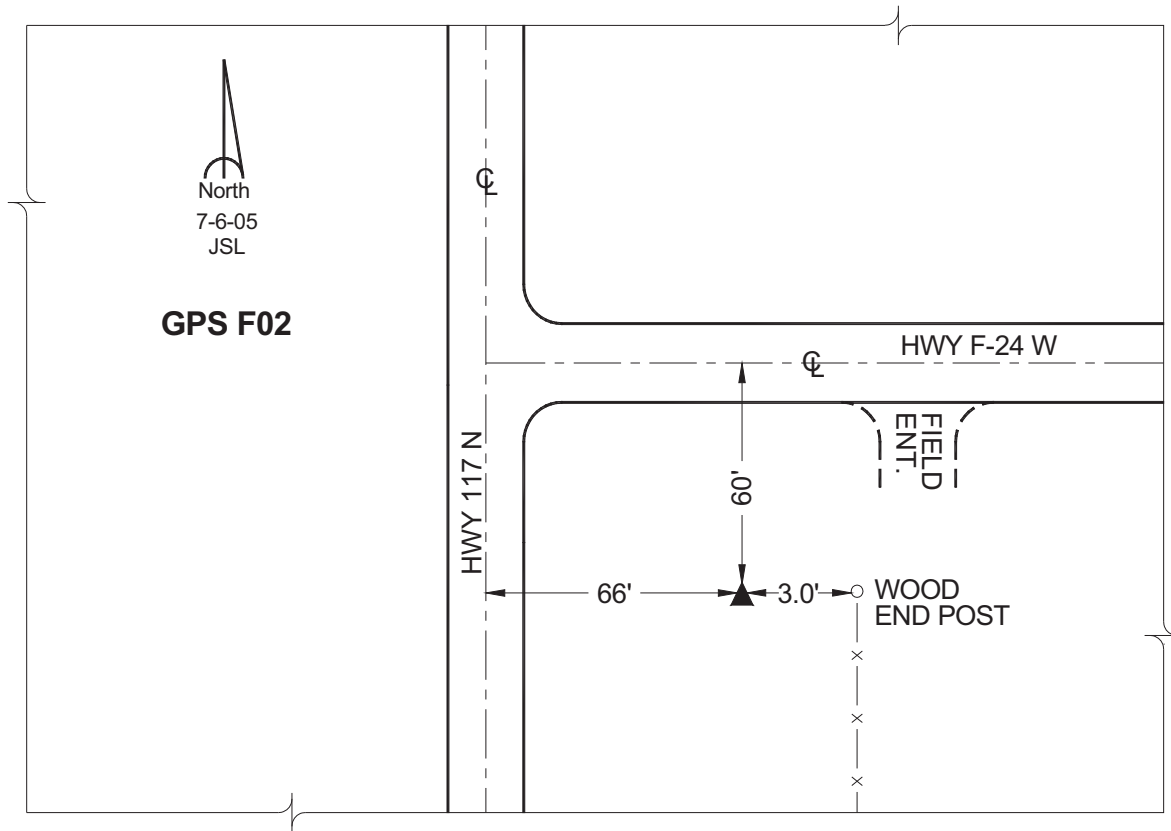
Northing: **647306.20sft** Easting: **1700362.05sft**

Orthometric Height: **815.84sft** Ellipsoid Height: **712.21sft** **Geoid03**

Latitude: **41°46'35.14777"** Longitude: **93°16'48.83994"**

Mapping Angle: **0°08'41"** Combination Scale Factor: **0.99996480**

Monument Type: Cast in-place concrete monument with aluminum disk.



This document was prepared by GBC and DCI for use by Jasper County, Iowa.