

Jasper County, Iowa
Iowa South Zone (1402)
Horiz. Datum: NAD83(1996)
Vert. Datum: NAVD 1988
US Survey Feet
2005

Point Name: **F03**

Designation: Jasper County GPS Monument F03-2005

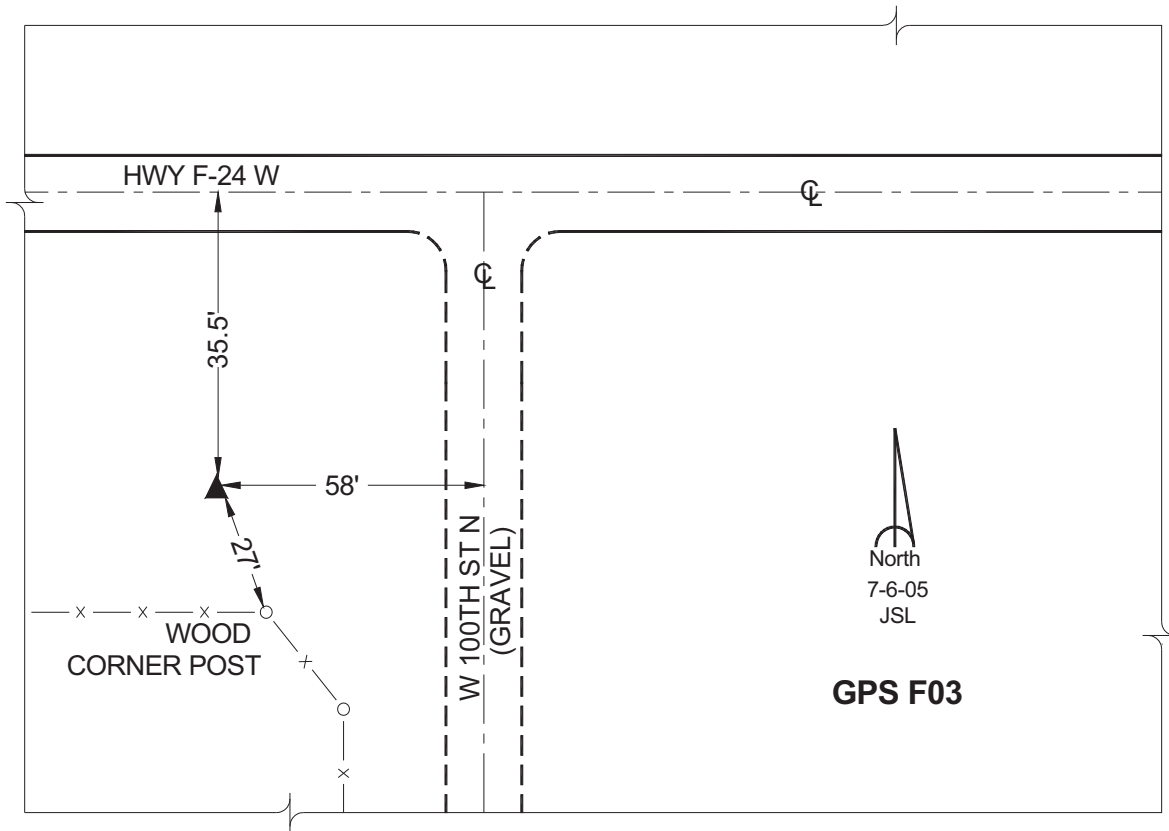
Northing: **647363.10sft** Easting: **1713474.10sft**

Orthometric Height: **883.60sft** Ellipsoid Height: **779.78sft** **Geoid03**

Latitude: **41°46'35.34686"** Longitude: **93°13'55.78568"**

Mapping Angle: **0°10'35"** Combination Scale Factor: **0.99996158**

Monument Type: Cast in-place concrete monument with aluminum disk.



This document was prepared by GBC and DCI for use by Jasper County, Iowa.