

Jasper County, Iowa
 Iowa South Zone (1402)
 Horiz. Datum: NAD83(1996)
 Vert. Datum: NAVD 1988
 US Survey Feet
2005

Point Name: **F04**

Designation: Jasper County GPS Monument F04-2005

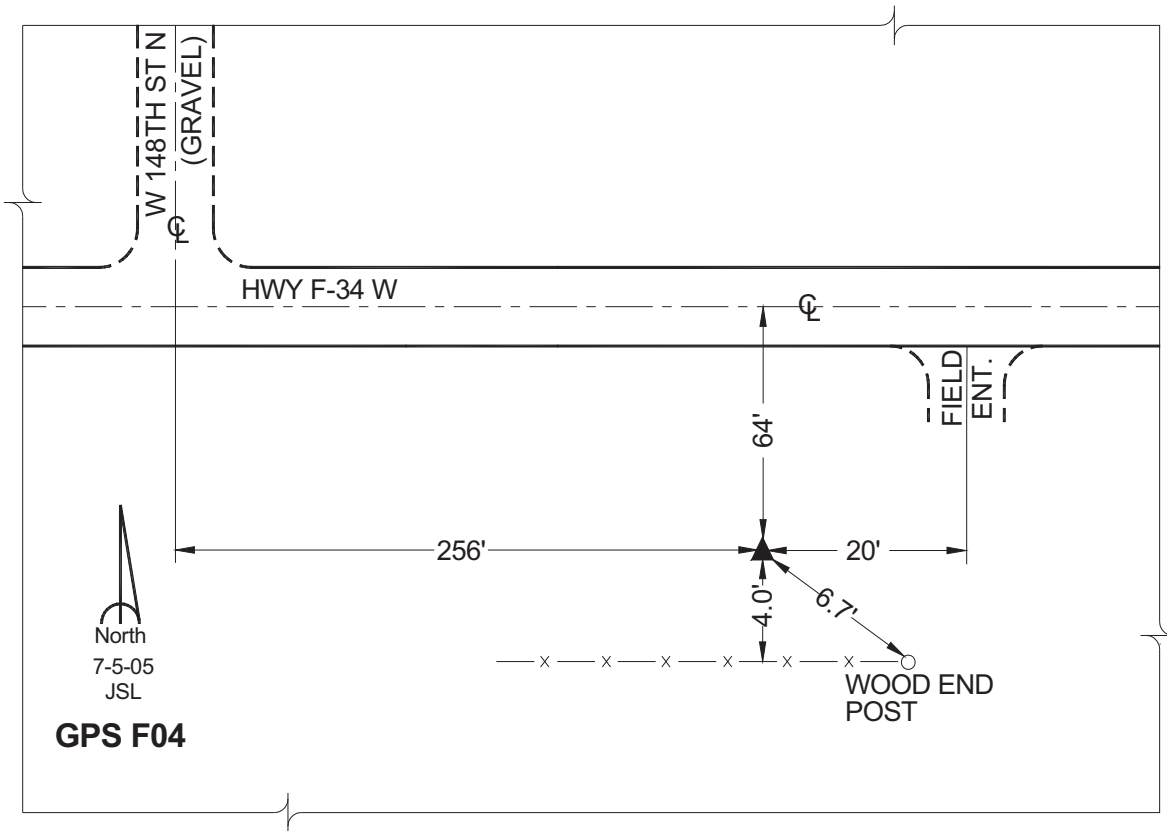
Northing: **630951.01sft** Easting: **1682067.64sft**

Orthometric Height: **806.97sft** Ellipsoid Height: **703.40sft** **Geoid03**

Latitude: **41°43'53.95589"** Longitude: **93°20'50.66788"**

Mapping Angle: **0°06'02"** Combination Scale Factor: **0.99995767**

Monument Type: Cast in-place concrete monument with aluminum disk.



This document was prepared by GBC and DCI for use by Jasper County, Iowa.