

Jasper County, Iowa
Iowa South Zone (1402)
Horiz. Datum: NAD83(1996)
Vert. Datum: NAVD 1988
US Survey Feet
2005

Point Name: **F05**

Designation: Jasper County GPS Monument F05-2005

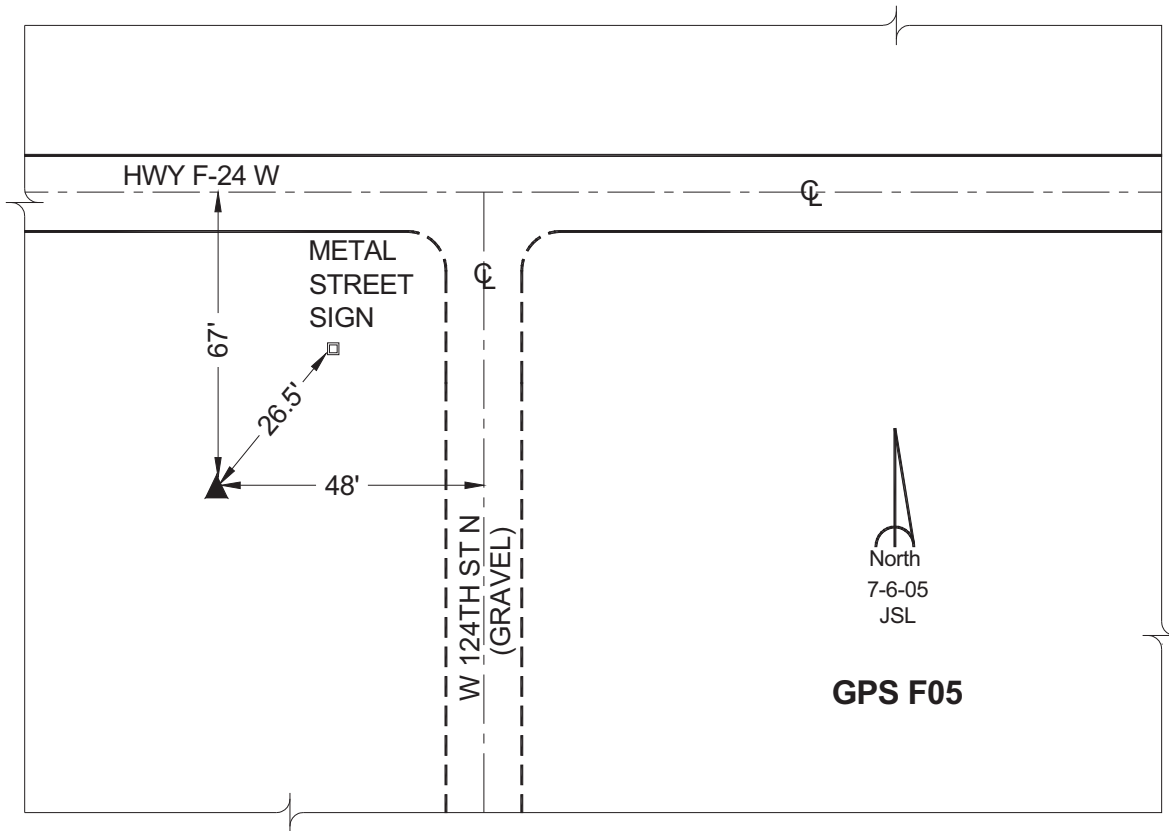
Northing: **630955.58sft** Easting: **1697735.16sft**

Orthometric Height: **897.79sft** Ellipsoid Height: **793.96sft** **Geoid03**

Latitude: **41°43'53.67838"** Longitude: **93°17'24.03056"**

Mapping Angle: **0°08'18"** Combination Scale Factor: **0.99995334**

Monument Type: Cast in-place concrete monument with aluminum disk.



This document was prepared by GBC and DCI for use by Jasper County, Iowa.