

Jasper County, Iowa
Iowa South Zone (1402)
Horiz. Datum: NAD83(1996)
Vert. Datum: NAVD 1988
US Survey Feet
2005

Point Name: **F06**

Designation: Jasper County GPS Monument F06-2005

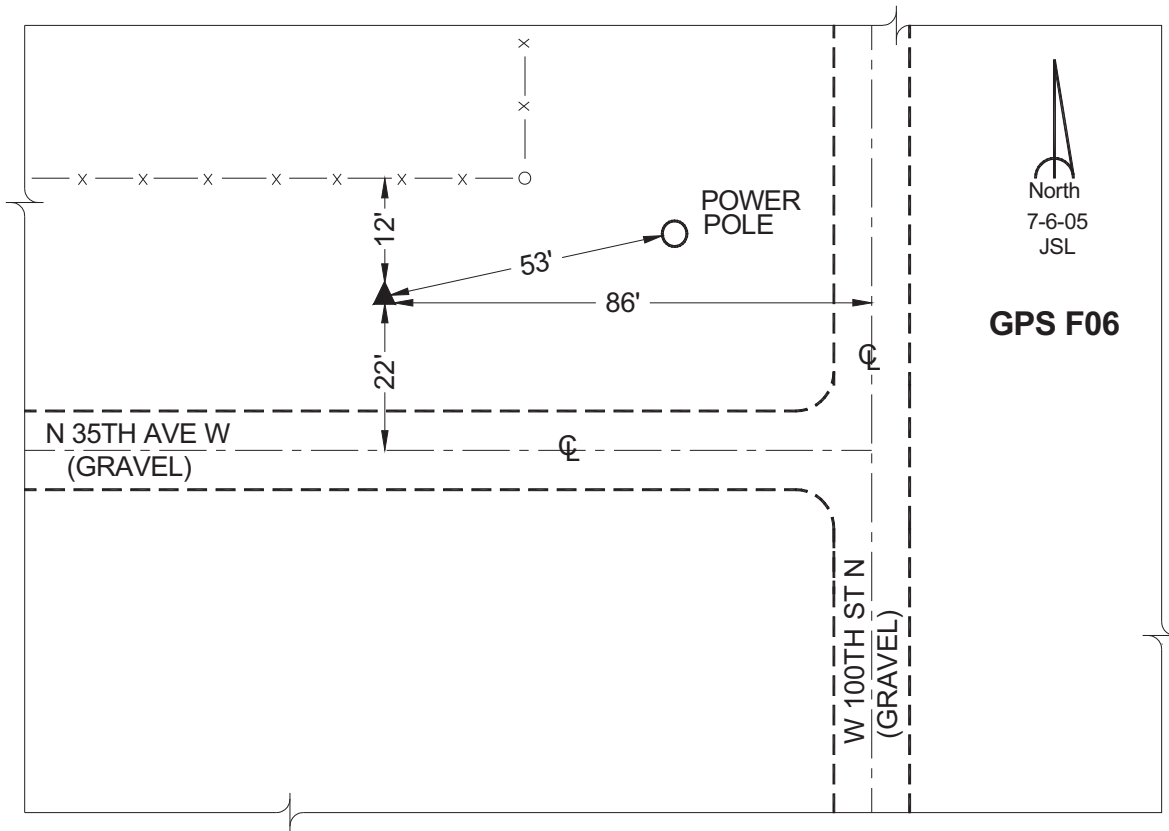
Northing: **631103.88sft** Easting: **1713477.86sft**

Orthometric Height: **826.77sft** Ellipsoid Height: **722.69sft** **Geoid03**

Latitude: **41°43'54.71647"** Longitude: **93°13'56.39635"**

Mapping Angle: **0°10'35"** Combination Scale Factor: **0.99995678**

Monument Type: Cast in-place concrete monument with aluminum disk.



This document was prepared by GBC and DCI for use by Jasper County, Iowa.