

Jasper County, Iowa
Iowa South Zone (1402)
Horiz. Datum: NAD83(1996)
Vert. Datum: NAVD 1988
US Survey Feet
2005

Point Name: **G01**

Designation: Jasper County GPS Monument G01-2005

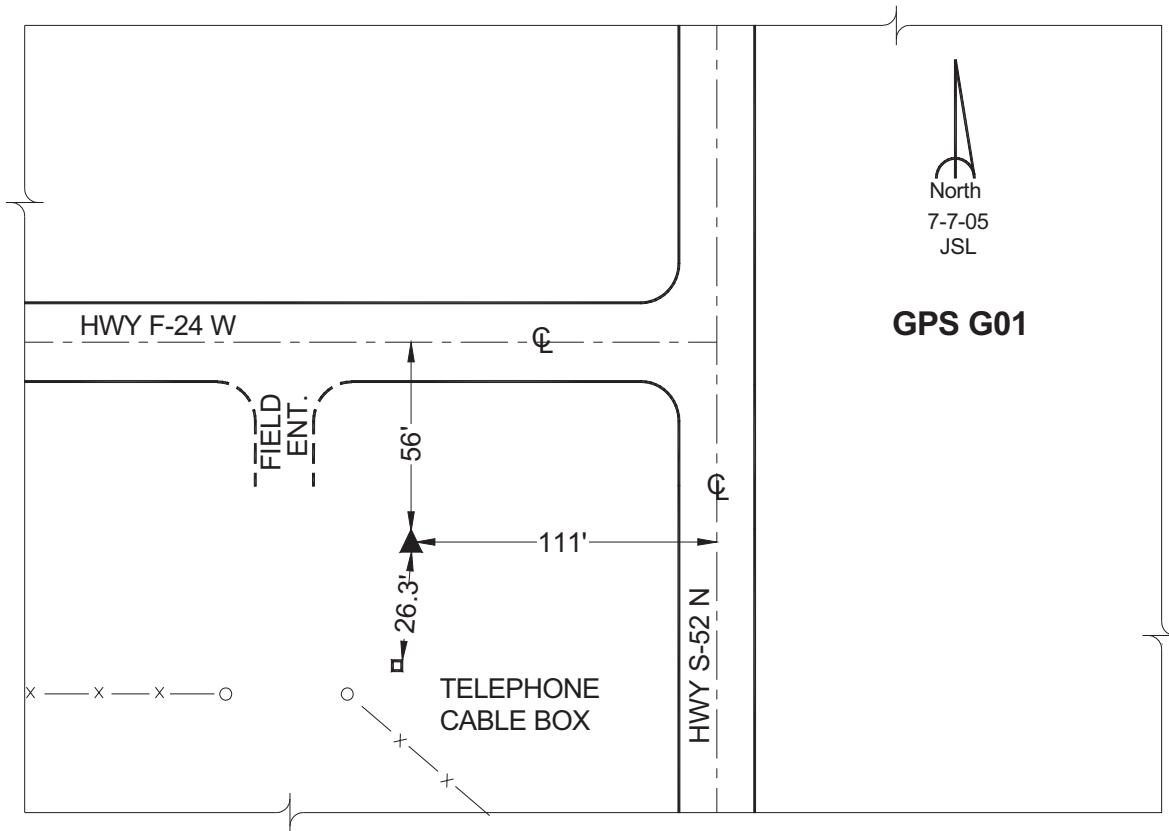
Northing: **646304.63sft** Easting: **1729208.83sft**

Orthometric Height: **956.19sft** Ellipsoid Height: **852.16sft** **Geoid03**

Latitude: **41°46'24.35973"** Longitude: **93°10'28.17228"**

Mapping Angle: **0°12'52"** Combination Scale Factor: **0.99995760**

Monument Type: Cast in-place concrete monument with aluminum disk.



This document was prepared by GBC and DCI for use by Jasper County, Iowa.