

Jasper County, Iowa
Iowa South Zone (1402)
Horiz. Datum: NAD83(1996)
Vert. Datum: NAVD 1988
US Survey Feet
2005

Point Name: **G02**

Designation: Jasper County GPS Monument G02-2005

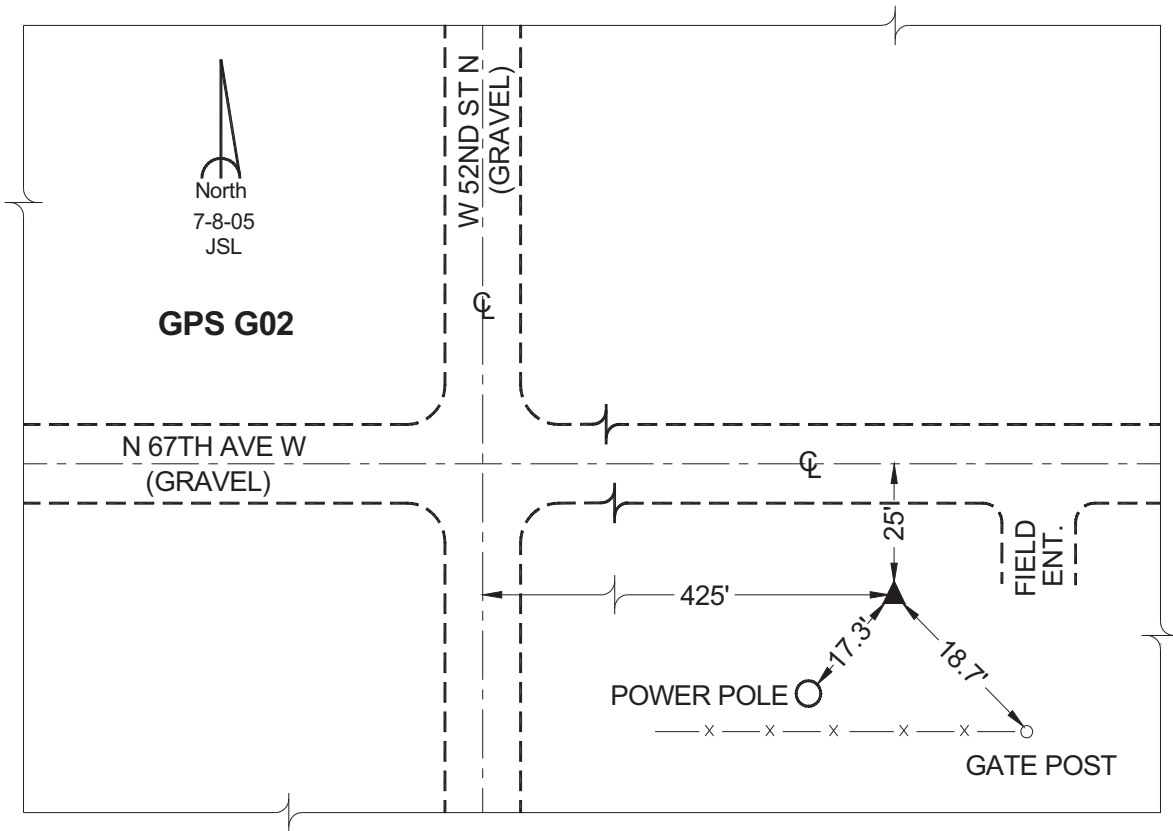
Northing: **647464.13sft** Easting: **1745522.55sft**

Orthometric Height: **963.23sft** Ellipsoid Height: **859.05sft** **Geoid03**

Latitude: **41°46'35.15617"** Longitude: **93°06'52.80796"**

Mapping Angle: **0°15'14"** Combination Scale Factor: **0.99995779**

Monument Type: Cast in-place concrete monument with aluminum disk.



This document was prepared by GBC and DCI for use by Jasper County, Iowa.