

Jasper County, Iowa
Iowa South Zone (1402)
Horiz. Datum: NAD83(1996)
Vert. Datum: NAVD 1988
US Survey Feet
2005

Point Name: **G03**

Designation: Jasper County GPS Monument G03-2005

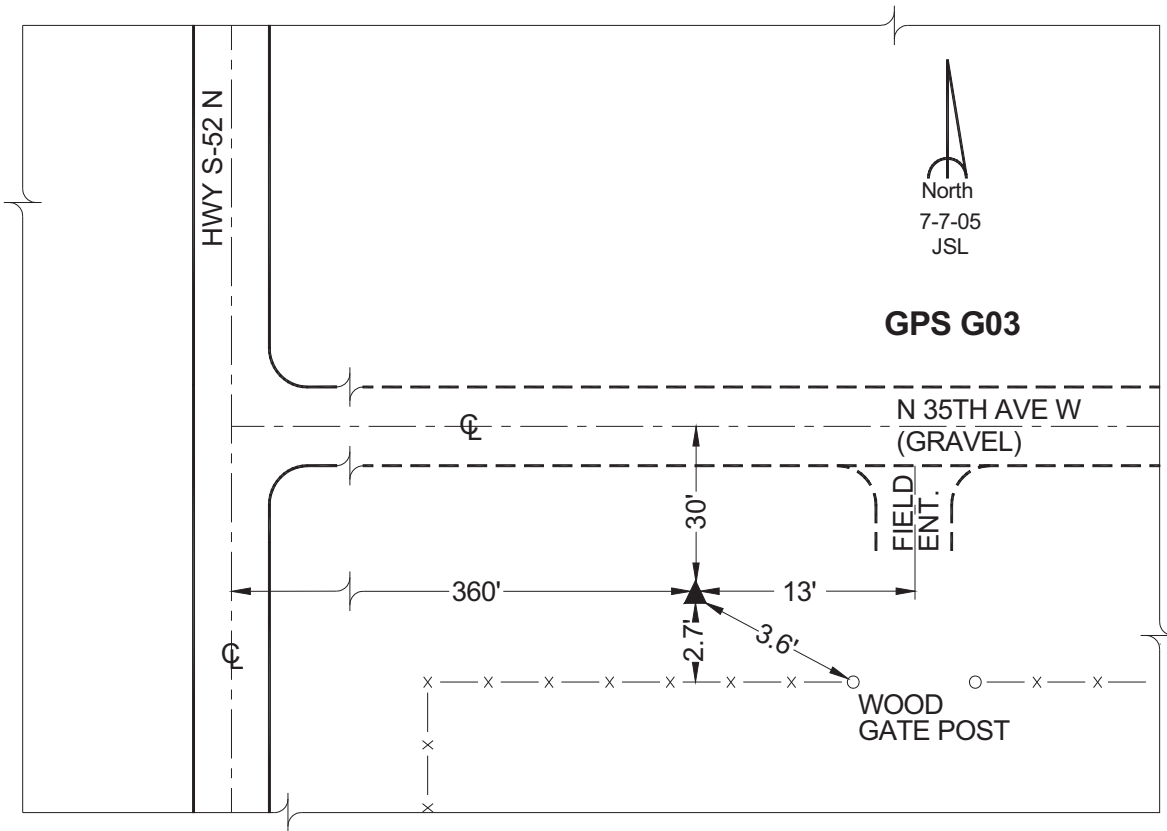
Northing: **631096.77sft** Easting: **1729748.77sft**

Orthometric Height: **916.74sft** Ellipsoid Height: **812.48sft** **Geoid03**

Latitude: **41°43'54.09651"** Longitude: **93°10'21.80159"**

Mapping Angle: **0°12'56"** Combination Scale Factor: **0.99995247**

Monument Type: Cast in-place concrete monument with aluminum disk.



This document was prepared by GBC and DCI for use by Jasper County, Iowa.