

**Jasper County, Iowa**  
Iowa South Zone (1402)  
Horiz. Datum: NAD83(1996)  
Vert. Datum: NAVD 1988  
US Survey Feet  
**2005**

Point Name: **H01**

**Designation:** Jasper County GPS Monument H01-2005

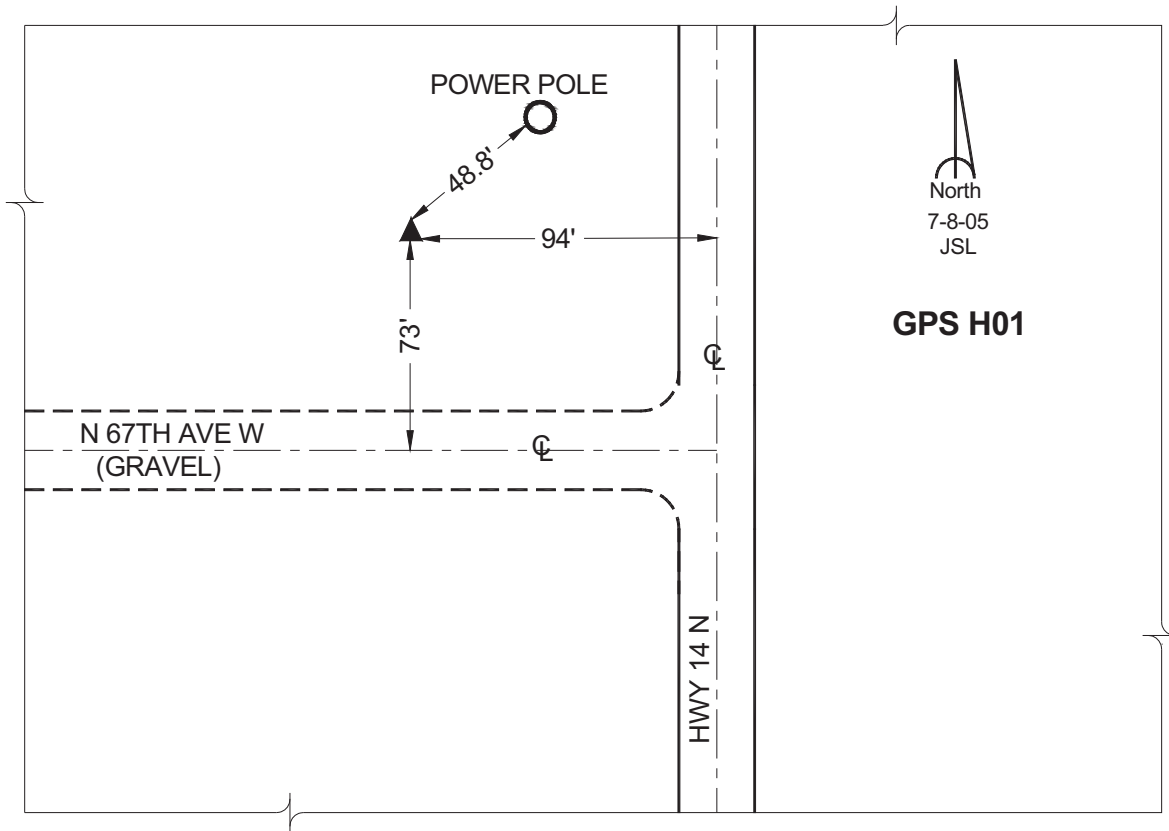
Northing: **647615.64sft**    Easting: **1760837.83sft**

Orthometric Height: **986.89sft**    Ellipsoid Height: **882.57sft**    **Geoid03**

Latitude: **41°46'35.93385"**    Longitude: **93°03'30.66927"**

Mapping Angle: **0°17'27"**    Combination Scale Factor: **0.99995671**

**Monument Type:** Cast in-place concrete monument with aluminum disk.



*This document was prepared by GBC and DCI for use by Jasper County, Iowa.*