

Jasper County, Iowa
Iowa South Zone (1402)
Horiz. Datum: NAD83(1996)
Vert. Datum: NAVD 1988
US Survey Feet
2005

Point Name: **H02**

Designation: Jasper County GPS Monument H02-2005

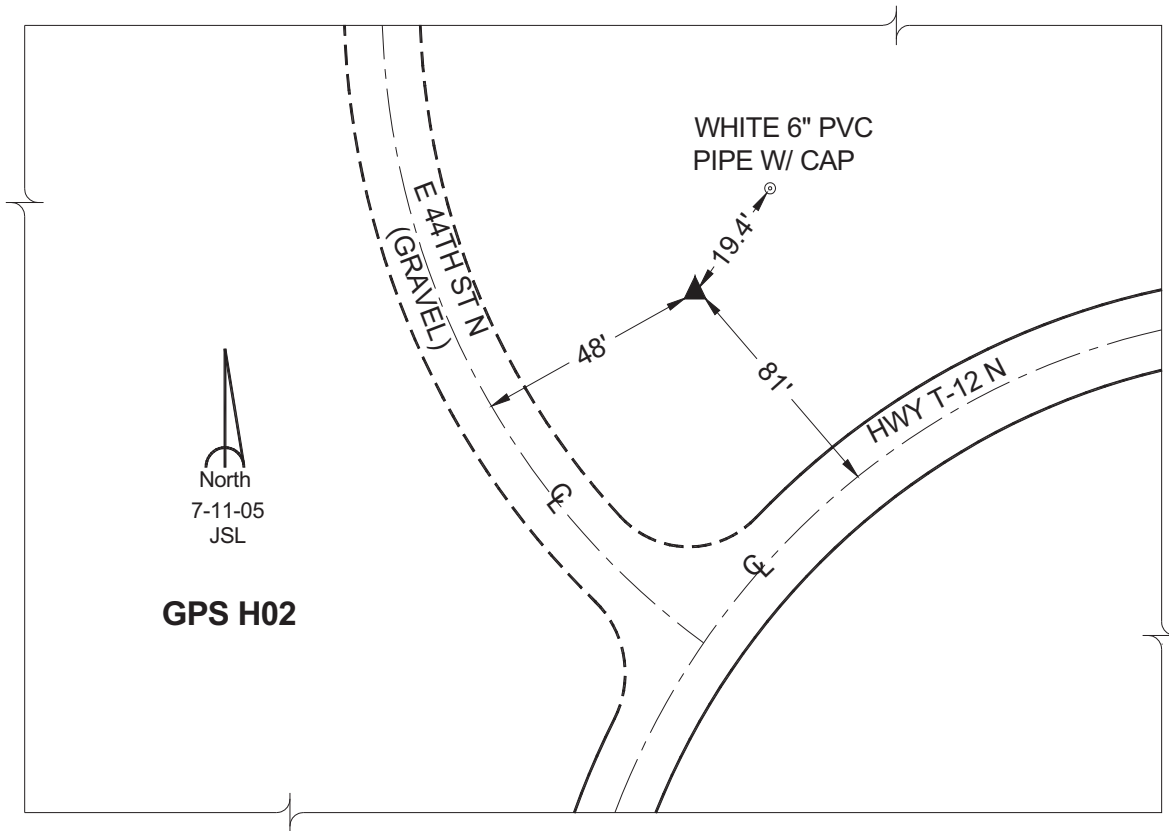
Northing: **647262.65sft** Easting: **1776952.21sft**

Orthometric Height: **867.92sft** Ellipsoid Height: **763.48sft** **Geoid03**

Latitude: **41°46'31.58449"** Longitude: **92°59'58.02126"**

Mapping Angle: **0°19'47"** Combination Scale Factor: **0.99996218**

Monument Type: Cast in-place concrete monument with aluminum disk.



This document was prepared by GBC and DCI for use by Jasper County, Iowa.