

**Jasper County, Iowa**  
Iowa South Zone (1402)  
Horiz. Datum: NAD83(1996)  
Vert. Datum: NAVD 1988  
US Survey Feet  
**2005**

Point Name: **H03**

**Designation:** Jasper County GPS Monument H03-2005

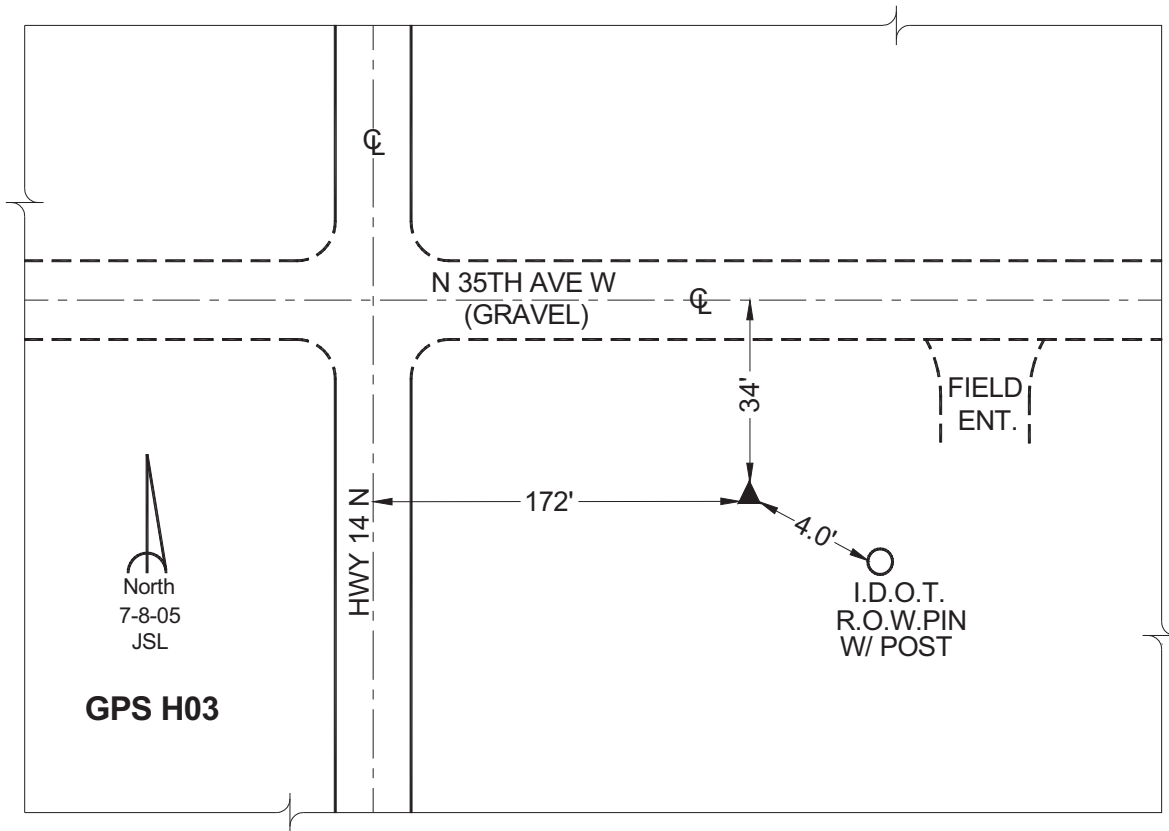
Northing: **631188.61sft**    Easting: **1761227.84sft**

Orthometric Height: **929.59sft**    Ellipsoid Height: **825.10sft**    **Geoid03**

Latitude: **41°43'53.62751"**    Longitude: **93°03'26.62523"**

Mapping Angle: **0°17'30"**    Combination Scale Factor: **0.99995185**

**Monument Type:** Cast in-place concrete monument with aluminum disk.



*This document was prepared by GBC and DCI for use by Jasper County, Iowa.*