

Jasper County, Iowa
Iowa South Zone (1402)
Horiz. Datum: NAD83(1996)
Vert. Datum: NAVD 1988
US Survey Feet
2005

Point Name: **H04**

Designation: Jasper County GPS Monument H04-2005

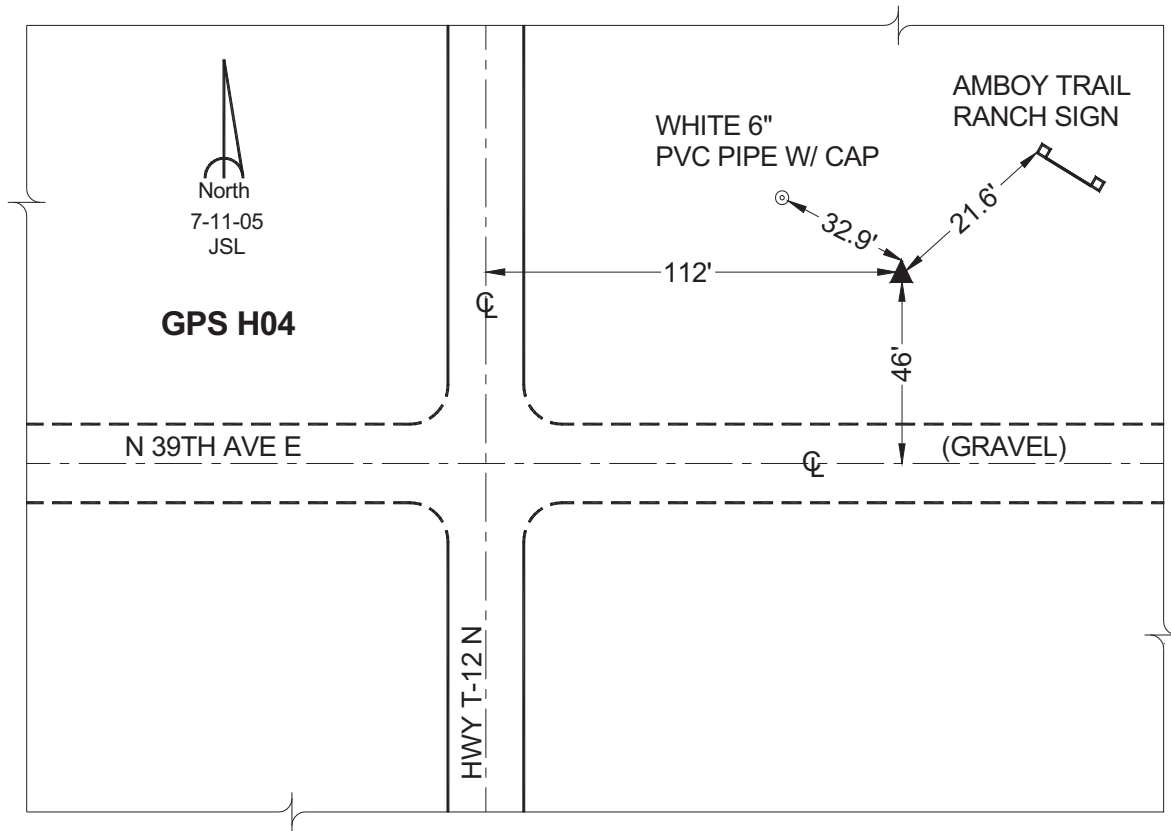
Northing: **632742.15sft** Easting: **1777024.34sft**

Orthometric Height: **956.57sft** Ellipsoid Height: **852.00sft** **Geoid03**

Latitude: **41°44'08.12941"** Longitude: **92°59'58.17210"**

Mapping Angle: **0°19'47"** Combination Scale Factor: **0.99995122**

Monument Type: Cast in-place concrete monument with aluminum disk.



This document was prepared by GBC and DCI for use by Jasper County, Iowa.