

Jasper County, Iowa
Iowa South Zone (1402)
Horiz. Datum: NAD83(1996)
Vert. Datum: NAVD 1988
US Survey Feet
2005

Point Name: **H05**

Designation: Jasper County GPS Monument H05-2005

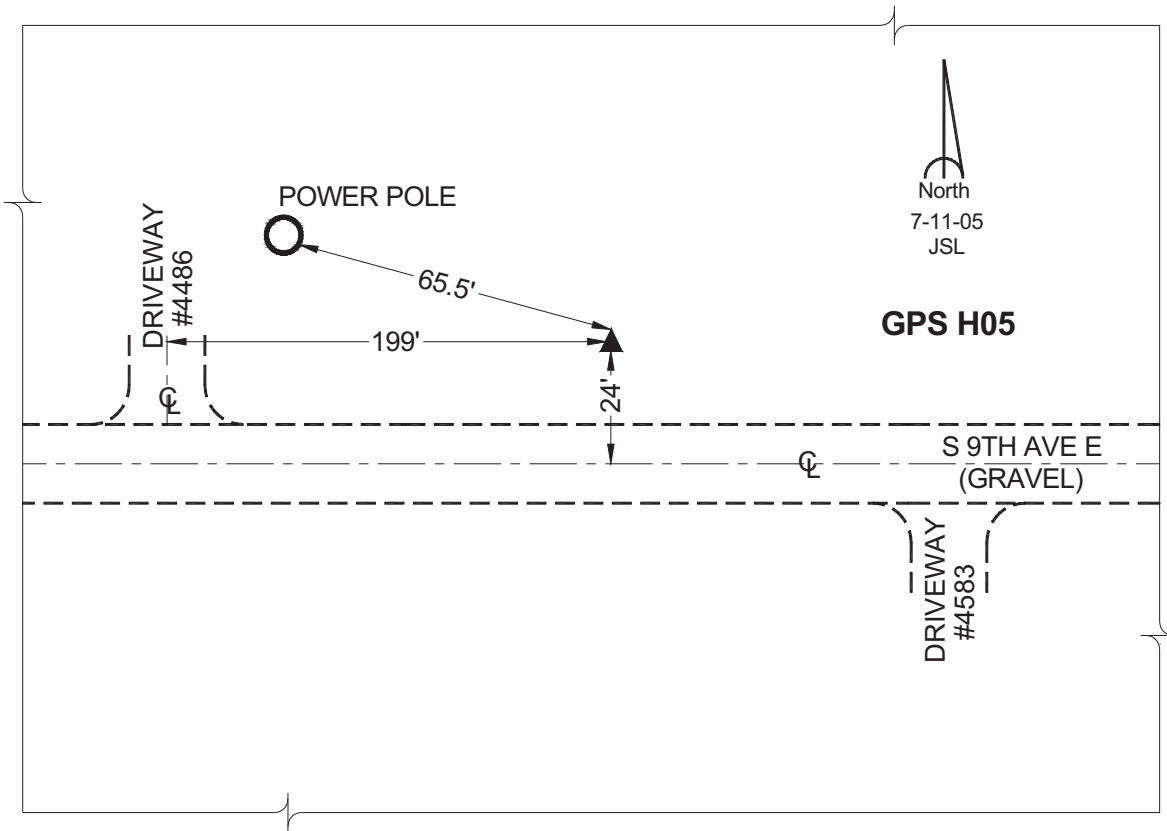
Northing: **616992.16sft** Easting: **1777514.42sft**

Orthometric Height: **897.47sft** Ellipsoid Height: **792.77sft** **Geoid03**

Latitude: **41°41'32.50189"** Longitude: **92°59'52.90694"**

Mapping Angle: **0°19'50"** Combination Scale Factor: **0.99994729**

Monument Type: Cast in-place concrete monument with aluminum disk.



This document was prepared by GBC and DCI for use by Jasper County, Iowa.