

Jasper County, Iowa
Iowa South Zone (1402)
Horiz. Datum: NAD83(1996)
Vert. Datum: NAVD 1988
US Survey Feet
2005

Point Name: **I01**

Designation: Jasper County GPS Monument I01-2005

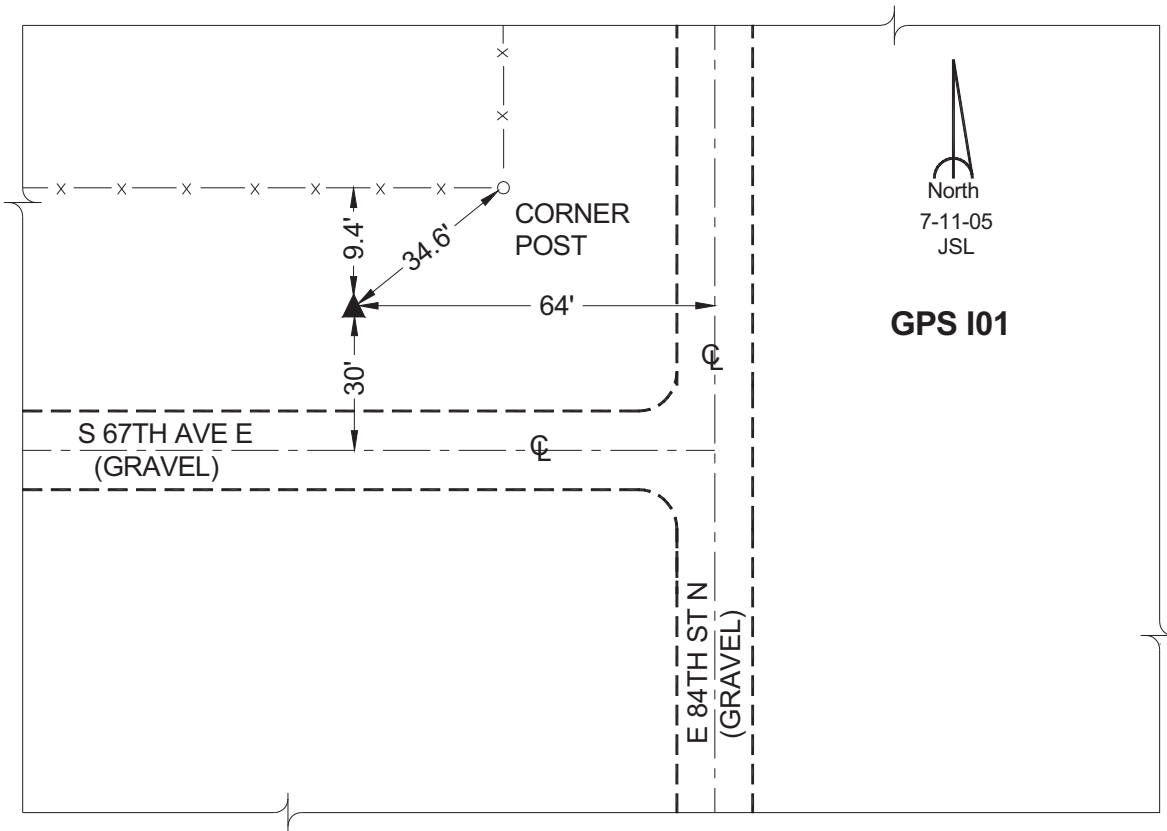
Northing: **647695.80sft** Easting: **1792661.28sft**

Orthometric Height: **941.92sft** Ellipsoid Height: **837.38sft** **Geoid03**

Latitude: **41°46'34.91920"** Longitude: **92°56'30.66374"**

Mapping Angle: **0°22'04"** Combination Scale Factor: **0.99995881**

Monument Type: Cast in-place concrete monument with aluminum disk.



This document was prepared by GBC and DCI for use by Jasper County, Iowa.