

Jasper County, Iowa
Iowa South Zone (1402)
Horiz. Datum: NAD83(1996)
Vert. Datum: NAVD 1988
US Survey Feet
2005

Point Name: **I02**

Designation: Jasper County GPS Monument I02-2005

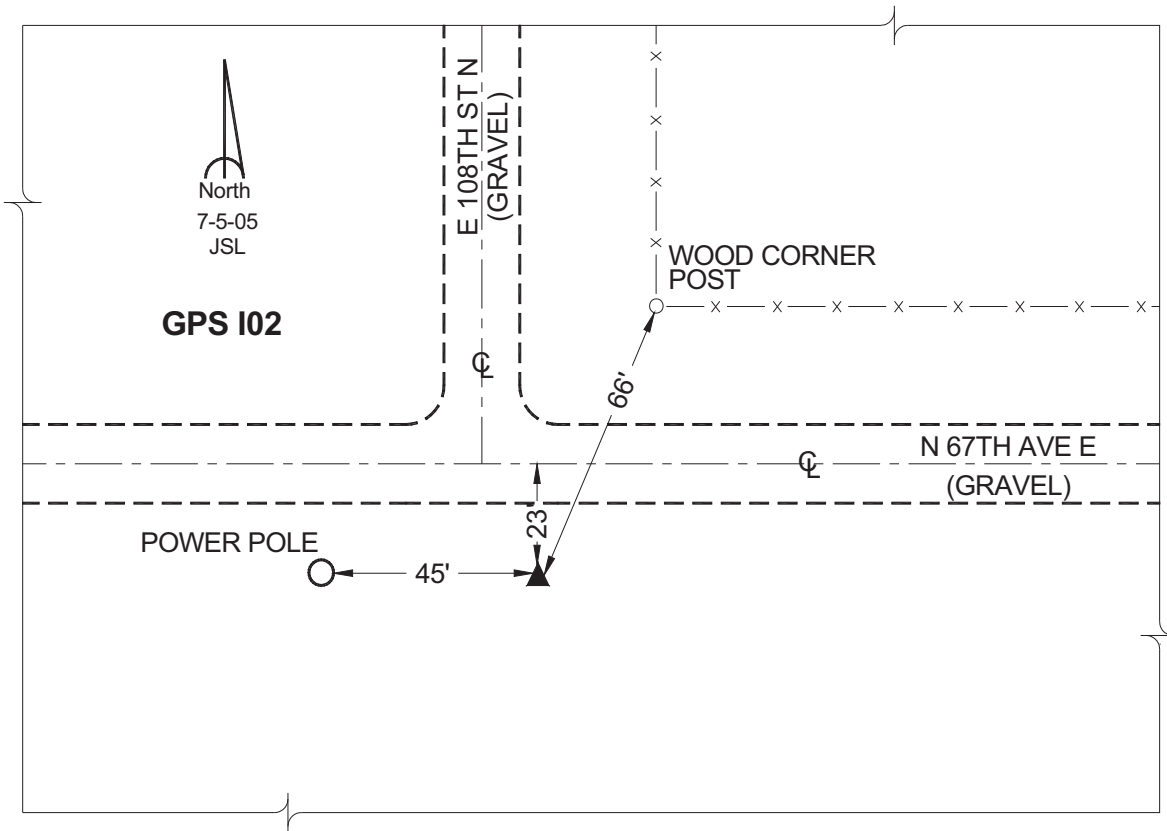
Northing: **647718.07sft** Easting: **1808660.53sft**

Orthometric Height: **1002.44sft** Ellipsoid Height: **897.78sft** **Geoid03**

Latitude: **41°46'34.07172"** Longitude: **92°52'59.50902"**

Mapping Angle: **0°24'23"** Combination Scale Factor: **0.99995589**

Monument Type: Cast in-place concrete monument with aluminum disk.



This document was prepared by GBC and DCI for use by Jasper County, Iowa.